

ID	Task	Task Name	Duration	Start	Finish	Predecessors	Half 1, 2019	Half 2, 2019	Half 1, 2020	Half 2, 2020	Half 1, 2021	Half 2, 2021	Half 1, 2022
1		<b>Obra:MEJORAMIENTO ACUEDUCTO AZUA (CONSTRUCCION Y EQUIPAMIENTO, CAMPO DE POZO LINEA ELECTRICA PRIMARIA 12.5 KV Y LINEA DE IMPULSION)</b>	<b>454 days</b>	<b>Mon 11/18/19</b>	<b>Thu 8/12/21</b>								
2		<b>GASTOS DIRECTOS</b>	<b>449 days</b>	<b>Mon 11/18/19</b>	<b>Thu 8/5/21</b>								
3		<b>REHABILITACION Y EQUIPAMIENTO LINEA ELECTRICA PRIMARIA 12.5 KV</b>	<b>180 days</b>	<b>Mon 11/18/19</b>	<b>Fri 7/24/20</b>								
4		POSTES HAV-12-500 DAN	30 days	Mon 11/18/19	Fri 12/27/19								
5		ESTRUCTURA MT-301	25 days	Mon 11/18/19	Fri 12/20/19								
6		ESTRUCTURA MT-302	25 days	Mon 11/18/19	Fri 12/20/19								
7		ESTRUCTURA MT-316	25 days	Mon 11/18/19	Fri 12/20/19								
8		ESTRUCTURA HA-100B	25 days	Mon 11/18/19	Fri 12/20/19								
9		ESTRUCTURA PR-101	25 days	Mon 11/18/19	Fri 12/20/19								
10		ESTRUCTURA PR-205 (SECCIONADOR FUSIBLE )	25 days	Mon 11/18/19	Fri 12/20/19								
11		APARTARRAYO DE 9 KV	15 days	Mon 11/18/19	Fri 12/6/19								
12		CUT-OUT, 200 AMP. 15 KV.	15 days	Mon 11/18/19	Fri 12/6/19								
13		ALAMBRE AAAC No. 2/0	12 days	Mon 11/18/19	Tue 12/3/19								
14		MANO DE OBRA ELÉCTRICA PRIMARIA (20%)	30 days	Mon 11/18/19	Fri 12/27/19								
15		HOYO PARA POSTES	7 days	Mon 11/18/19	Tue 11/26/19								
16		HOYO PARA VIENTOS	7 days	Mon 11/18/19	Tue 11/26/19								
17		DESMANTELAR LINEA PRIMARIA	10 days	Mon 11/18/19	Fri 11/29/19								
18		INSTALACION DE POSTES	15 days	Mon 11/18/19	Fri 12/6/19								
19		<b>REHABILITACION CASETA DE BOMBEO CON TECHO DESLIZABLE POZO 4 Y 4A</b>	<b>12 days</b>	<b>Mon 12/30/19</b>	<b>Tue 1/14/20</b>	<b>4</b>							
20		<b>INSTALACIONES ELECTRICAS</b>	<b>12 days</b>	<b>Mon 12/30/19</b>	<b>Tue 1/14/20</b>								
21		ENTRADA GENERAL	12 days	Mon 12/30/19	Tue 1/14/20								
22		SALIDA	12 days	Mon 12/30/19	Tue 1/14/20								
23		INTERRUPTORES SENCILLOS	12 days	Mon 12/30/19	Tue 1/14/20								
24		TOMACORRIENTES SENCILLOS	12 days	Mon 12/30/19	Tue 1/14/20								
25		LAMPARA 250W, HPS	12 days	Mon 12/30/19	Tue 1/14/20								
26		LIMPIEZA FINAL	2 days	Mon 12/30/19	Tue 12/31/19								
27		REHABILITACION DE POZO NUMERO NO. 5	34 days	Wed 1/15/20	Mon 3/2/20	20							
28		<b>VERJA TIPO DESLIZABLE PARA CASETA DESLIZABLE</b>	<b>15 days</b>	<b>Wed 1/15/20</b>	<b>Tue 2/4/20</b>	<b>19</b>							
29		<b>VERJA MALLA CICLONICA</b>	<b>15 days</b>	<b>Wed 1/15/20</b>	<b>Tue 2/4/20</b>								
30		VERJA DE MALLA CICLONICA CON 3 LINEAS BLOCK	15 days	Wed 1/15/20	Tue 2/4/20								
31		COLUMNA C2 ( 0.25 X 0.25 )- 4.75 (INC. ZAPATA)	3 days	Wed 1/15/20	Fri 1/17/20								
32		COLUMNA C1 (0.15 X 0.15 ) -8.75	3 days	Wed 1/15/20	Fri 1/17/20								

Project: campo de pozos azua  
Date: Fri 9/18/20

Task		Project Summary		Manual Task		Start-only		Deadline	
Split		Inactive Task		Duration-only		Finish-only		Progress	
Milestone		Inactive Milestone		Manual Summary Rollup		External Tasks		Manual Progress	
Summary		Inactive Summary		Manual Summary		External Milestone			

ID	Task	Task Name	Duration	Start	Finish	Predecessors	Half 1, 2019	Half 2, 2019	Half 1, 2020	Half 2, 2020	Half 1, 2021	Half 2, 2021	Half 1, 2022
33		PUERTA MALLA CICLONICA (4 M)	3 days	Wed 1/15/20	Fri 1/17/20								
34		LOGO Y LETRERO DE INAPA	2 days	Wed 1/15/20	Thu 1/16/20								
35		SUMINISTRO Y COLOC. MATERIAL P/ RELLENO	2 days	Wed 1/15/20	Thu 1/16/20								
36		EMBELLECIMIENTO C/ GRAVILLA	2 days	Wed 1/15/20	Thu 1/16/20								
37		CASETA DE MATERIALES	5 days	Wed 1/15/20	Tue 1/21/20								
38		LIMPIEZA FINAL	2 days	Wed 1/15/20	Thu 1/16/20								
39		<b>TERMINACION DE CASETA DE OPERADOR</b>	<b>19 days</b>	<b>Wed 2/5/20</b>	<b>Mon 3/2/20</b>								
40		<b>TERMINACION DE SUPERFICIE</b>	<b>9 days</b>	<b>Wed 2/5/20</b>	<b>Mon 2/17/20</b>	29							
41		PAÑETE INTERIOR	3 days	Wed 2/5/20	Fri 2/7/20								
42		PAÑETE EXTERIOR	3 days	Wed 2/5/20	Fri 2/7/20								
43		PAÑETE EN TECHO	3 days	Wed 2/5/20	Fri 2/7/20								
44		ANTEPECHO	2 days	Mon 2/10/20	Tue 2/11/20	41							
45		ACERA PERIMETRAL 0.80M	2 days	Wed 2/12/20	Thu 2/13/20	44							
46		CANTOS Y MOCHETAS	2 days	Fri 2/14/20	Mon 2/17/20	45							
47		<b>REVESTIMIENTO EN PAREDES</b>	<b>1 day</b>	<b>Tue 2/18/20</b>	<b>Tue 2/18/20</b>	40							
48		CERÁMICA CRIOLLA EN BAÑO (INC. TODOS LAS PAREDES DEL BAÑO )	1 day	Tue 2/18/20	Tue 2/18/20	7							
49		<b>INSTALACIONES ELÉCTRICAS</b>	<b>3 days</b>	<b>Wed 2/19/20</b>	<b>Fri 2/21/20</b>	47							
50		SALIDAS CENITALES	3 days	Wed 2/19/20	Fri 2/21/20								
51		TOMACORRIENTE 110 V EN DOBLE	3 days	Wed 2/19/20	Fri 2/21/20								
52		INTERRUPTOR SENCILLO	3 days	Wed 2/19/20	Fri 2/21/20								
53		CAJA DE BREAKER	3 days	Wed 2/19/20	Fri 2/21/20								
54		ENTRADA GENERAL	3 days	Wed 2/19/20	Fri 2/21/20								
55		PINTURA	4 days	Mon 2/24/20	Thu 2/27/20	49							
56		PINTURA ACRÍLICA	4 days	Mon 2/24/20	Thu 2/27/20								
57		PUERTAS Y VENTANAS	2 days	Fri 2/28/20	Mon 3/2/20	55							
58		PUERTAS EVERDOR( INCLUYE LLAVIN E INSTALACION )	2 days	Fri 2/28/20	Mon 3/2/20								
59		VENTANAS DE ALUMINIO	2 days	Fri 2/28/20	Mon 3/2/20								
60		LIMPIEZA FINAL	1 day	Fri 2/28/20	Fri 2/28/20								
61		<b>CONSTRUCCION Y EQUIPAMIENTO DE POZO 2</b>	<b>85 days</b>	<b>Tue 3/3/20</b>	<b>Mon 6/29/20</b>	27							
62		GARITA PARA OPERADOR	46 days	Tue 3/3/20	Tue 5/5/20								
63		PRELIMINARES	1 day	Tue 3/3/20	Tue 3/3/20								
64		REPLANTEO	1 day	Tue 3/3/20	Tue 3/3/20								
65		MOVIMIENTO DE TIERRA	1 day	Tue 3/3/20	Tue 3/3/20								
66		HORMIGÓN ARMADO	6 days	Wed 3/4/20	Wed 3/11/20	63							
67		ZAPATA DE MUROS 0.45 X 0.25 (0.74 QQ)	3 days	Wed 3/4/20	Fri 3/6/20								
68		H.A. VIGA DE AMARRE 0.15 X 0.20 (4.36 QQ)	3 days	Mon 3/9/20	Wed 3/11/20	67							

Project: campo de pozos azua  
Date: Fri 9/18/20

Task		Project Summary		Manual Task		Start-only		Deadline	
Split		Inactive Task		Duration-only		Finish-only		Progress	
Milestone		Inactive Milestone		Manual Summary Rollup		External Tasks		Manual Progress	
Summary		Inactive Summary		Manual Summary		External Milestone			

ID	Task	Task Name	Duration	Start	Finish	Predecessors	Half 1, 2019	Half 2, 2019	Half 1, 2020	Half 2, 2020	Half 1, 2021	Half 2, 2021	Half 1, 2022
69		H.A. LOSA DE TECHO , E= 0.10 (1.56 QQ)	3 days	Wed 3/4/20	Fri 3/6/20								
70		MURO DE BLOCKS	3 days	Thu 3/12/20	Mon 3/16/20	66							
71		BLOCK 6"	3 days	Thu 3/12/20	Mon 3/16/20								
72		BLOCK CALADO	3 days	Thu 3/12/20	Mon 3/16/20								
73		<b>TERMINACIÓN DE SUPERFICIE</b>	<b>13 days</b>	<b>Tue 3/17/20</b>	<b>Thu 4/2/20</b>	<b>70</b>							
74		PAÑETE INTERIOR(INCLUYE PAÑETE DE TECHO)	5 days	Tue 3/17/20	Mon 3/23/20								
75		PAÑETE EXTERIOR	5 days	Tue 3/17/20	Mon 3/23/20								
76		PAÑETE INTERIOR(INCLUYE PAÑETE DE TECHO)	5 days	Tue 3/17/20	Mon 3/23/20								
77		FINO DE TECHO	5 days	Tue 3/24/20	Mon 3/30/20	76							
78		FRAGUACHE EN TECHO	5 days	Tue 3/17/20	Mon 3/23/20								
79		ACERA PERIMETRAL 0.80M	5 days	Tue 3/24/20	Mon 3/30/20	74							
80		CANTOS Y MOCHETAS	5 days	Tue 3/24/20	Mon 3/30/20	78							
81		IMPERMEABILIZANTE DE TECHO	3 days	Tue 3/31/20	Thu 4/2/20	77							
82		REVESTIMIENTO PARED BANO	3 days	Tue 3/17/20	Thu 3/19/20								
83		PISOS H.S PULIDO	3 days	Tue 3/17/20	Thu 3/19/20								
84		ZABALETA	3 days	Tue 3/17/20	Thu 3/19/20								
85		<b>REVESTIMIENTO EN PAREDES</b>	<b>6 days</b>	<b>Fri 4/3/20</b>	<b>Fri 4/10/20</b>	<b>73</b>							
86		CERÁMICA CRIOLLA EN BAÑO (INC. TODOS LAS PAREDES DEL BAÑO )	6 days	Fri 4/3/20	Fri 4/10/20								
87		<b>INSTALACION SANITARIA</b>	<b>4 days</b>	<b>Mon 4/13/20</b>	<b>Thu 4/16/20</b>	<b>85</b>							
88		INODORO BLANCO SENCILLO	1 day	Mon 4/13/20	Mon 4/13/20								
89		LAVAMANO BLANCO PEQUEÑO	1 day	Mon 4/13/20	Mon 4/13/20								
90		DESAGUE DE PISO	1 day	Mon 4/13/20	Mon 4/13/20								
91		COLUMNA DE VENTILACION 3"	1 day	Tue 4/14/20	Tue 4/14/20	90							
92		GALERIA DE INFILTRACION	1 day	Wed 4/15/20	Wed 4/15/20	91							
93		CAMARA DE INSPECCION	1 day	Thu 4/16/20	Thu 4/16/20	92							
94		CAMARA SEPTICA	1 day	Thu 4/16/20	Thu 4/16/20	92							
95		FILTRANTE 4"	1 day	Mon 4/13/20	Mon 4/13/20								
96		SUM. E INSTALACION TINACO 250GLS	1 day	Mon 4/13/20	Mon 4/13/20								
97		TUBERIAS Y PIEZAS AGUA POTABLE	1 day	Mon 4/13/20	Mon 4/13/20								
98		TUBERIAS Y PIEZAS AGUAS RESIDUALES	1 day	Mon 4/13/20	Mon 4/13/20								
99		M.O. PLOMERIA GENERAL	1 day	Mon 4/13/20	Mon 4/13/20								
100		PINTURA	2 days	Fri 4/17/20	Mon 4/20/20	87							
101		PINTURA ACRÍLICA	2 days	Fri 4/17/20	Mon 4/20/20								
102		PUERTAS Y VENTANAS	1 day	Tue 4/21/20	Tue 4/21/20	100							
103		PUERTAS EVERDOR( INCLUYE LLAVIN E INSTALACION )( 2.10 X 1.50 M)	1 day	Tue 4/21/20	Tue 4/21/20								
104		VENTANA DE ALUMINIO 0.60 X0.60	1 day	Tue 4/21/20	Tue 4/21/20								

Project: campo de pozos azua  
Date: Fri 9/18/20

Task		Project Summary		Manual Task		Start-only		Deadline	
Split		Inactive Task		Duration-only		Finish-only		Progress	
Milestone		Inactive Milestone		Manual Summary Rollup		External Tasks		Manual Progress	
Summary		Inactive Summary		Manual Summary		External Milestone			

ID	Task	Task Name	Duration	Start	Finish	Predecessors	Half 1, 2019	Half 2, 2019	Half 1, 2020	Half 2, 2020	Half 1, 2021	Half 2, 2021	Half 1, 2022
105		<b>INSTALACIONES ELÉCTRICAS</b>	<b>11 days</b>	<b>Tue 4/21/20</b>	<b>Tue 5/5/20</b>	<b>100</b>							
106		SALIDA CENITAL	3 days	Tue 4/21/20	Thu 4/23/20								
107		INTERRUPTOR SENCILLO	3 days	Tue 4/21/20	Thu 4/23/20	16							
108		TOMACORRIENTES DOBLE, 120V	3 days	Fri 4/24/20	Tue 4/28/20	107							
109		PANEL DE DISTRIBUCION 4/8 CIRCUITOS (INC. BREAKERS)	1 day	Wed 4/29/20	Wed 4/29/20	108							
110		ORNAMENTACION EN VERJA PERIMETRAL	2 days	Thu 4/30/20	Fri 5/1/20	109							
111		LIMPIEZA FINAL	2 days	Mon 5/4/20	Tue 5/5/20	110							
112		<b>CASETA DE BOMBEO CON TECHO DESLIZABLE POZO.2A</b>	<b>35 days</b>	<b>Wed 5/6/20</b>	<b>Tue 6/23/20</b>	<b>62</b>							
113		REPLANTEO	1 day	Wed 5/6/20	Wed 5/6/20								
114		MOVIMIENTO DE TIERRA	1 day	Wed 5/6/20	Wed 5/6/20								
115		<b>HORMIGON ARMADO EN: FC'=240 KG/CM2</b>	<b>15 days</b>	<b>Thu 5/7/20</b>	<b>Wed 5/27/20</b>	<b>113</b>							
116		ZAPATA DE MURO 0.36 QQ FC =180 KG/CM2	2 days	Thu 5/7/20	Fri 5/8/20								
117		VIGA 0.20 X 0.30 3.56 QQ	2 days	Mon 5/11/20	Tue 5/12/20	116							
118		LOSA DE TECHO 0.10- 0.48 QQ	2 days	Wed 5/13/20	Thu 5/14/20	117							
119		DINTEL 0.20 X 0.15 -3.89 QQ	2 days	Fri 5/15/20	Mon 5/18/20	118							
120		RAMPA D/ ACCESO A 0.05	2 days	Tue 5/19/20	Wed 5/20/20	119							
121		SOPORTE DE CORREDERA 0.89	3 days	Thu 5/21/20	Mon 5/25/20	120							
122		BASE DE MOTOR Y BOMBEO	1 day	Tue 5/26/20	Tue 5/26/20	121							
123		COLUMNA 0.20 X 0.15- 4.58 QQ/M3	1 day	Wed 5/27/20	Wed 5/27/20	122							
124		MUROS	6 days	Thu 5/28/20	Thu 6/4/20	115							
125		MURO BLOCK 6" (B.N.P.)	2 days	Thu 5/28/20	Fri 5/29/20								
126		MURO BLOCK 6" (S.N.P.)	2 days	Mon 6/1/20	Tue 6/2/20	125							
127		MURO BLOCK CALADOS	2 days	Wed 6/3/20	Thu 6/4/20	126							
128		<b>TERMINACION DE SUPERFICIE:</b>	<b>10 days</b>	<b>Fri 6/5/20</b>	<b>Thu 6/18/20</b>	<b>124</b>							
129		PAÑETE EXTERIOR	2 days	Fri 6/5/20	Mon 6/8/20								
130		FINO LOSA TECHO	2 days	Tue 6/9/20	Wed 6/10/20	129							
131		CANTOS Y MOCHETAS	2 days	Thu 6/11/20	Fri 6/12/20	130							
132		ANTEPECHO DE BLOQUES (UNA LINEA DE BLOCK)	2 days	Mon 6/15/20	Tue 6/16/20	131							
133		PINTURA MANTENIMIENTO	2 days	Wed 6/17/20	Thu 6/18/20	134							
134		PISO HORMIGON PULIDO	2 days	Mon 6/15/20	Tue 6/16/20	131							
135		ZABALETA	1 day	Mon 6/15/20	Mon 6/15/20	131							
136		PORTAJE	2 days	Fri 6/19/20	Mon 6/22/20	128							
137		PUERTA METALICA POSTERIOR (1.00M X 2.10 M)	1 day	Fri 6/19/20	Fri 6/19/20								
138		VENTANA DE BLOCKS CALADOS	1 day	Mon 6/22/20	Mon 6/22/20	137							

Project: campo de pozos azua  
Date: Fri 9/18/20

Task		Project Summary		Manual Task		Start-only		Deadline	
Split		Inactive Task		Duration-only		Finish-only		Progress	
Milestone		Inactive Milestone		Manual Summary Rollup		External Tasks		Manual Progress	
Summary		Inactive Summary		Manual Summary		External Milestone			

ID	Task	Task Name	Duration	Start	Finish	Predecessors	Half 1, 2019	Half 2, 2019	Half 1, 2020	Half 2, 2020	Half 1, 2021	Half 2, 2021	Half 1, 2022
139		PUERTA METALICA FRONTAL (4.00M X 2.70 M)	1 day	Fri 6/19/20	Fri 6/19/20	137SS							
140		<b>INSTALACIONES ELECTRICAS</b>	<b>1 day</b>	<b>Tue 6/23/20</b>	<b>Tue 6/23/20</b>	<b>136</b>							
141		ENTRADA GENERAL	1 day	Tue 6/23/20	Tue 6/23/20								
142		SALIDA CENTRALES	1 day	Tue 6/23/20	Tue 6/23/20								
143		INTERRUPTORES SENCILLOS	1 day	Tue 6/23/20	Tue 6/23/20								
144		TOMACORRIENTES SENCILLOS	1 day	Tue 6/23/20	Tue 6/23/20								
145		ACERA EXT. DE 0.80 DE ANCHO	3 days	Tue 3/3/20	Thu 3/5/20								
146		<b>TECHO DESLIZABLE (4.00M X5.00 M)</b>	<b>4 days</b>	<b>Wed 6/24/20</b>	<b>Mon 6/29/20</b>	<b>140</b>							
147		ANGULARES DE 11/2 X 3/16 P/ TIJERILLAS	4 days	Wed 6/24/20	Mon 6/29/20								
148		ALUZINC	2 days	Wed 6/24/20	Thu 6/25/20								
149		ZINC LISO	2 days	Wed 6/24/20	Thu 6/25/20								
150		ANGULAR 2" X 2" X 1/4"	2 days	Wed 6/24/20	Thu 6/25/20								
151		CHANNEL 4" X 1/2"	2 days	Wed 6/24/20	Thu 6/25/20								
152		CAJA DE BOLA	2 days	Wed 6/24/20	Thu 6/25/20								
153		CABALLETE	2 days	Wed 6/24/20	Thu 6/25/20								
154		SOLDADURA Y ELECTRODOS	2 days	Wed 6/24/20	Thu 6/25/20								
155		MANO DE OBRA	2 days	Wed 6/24/20	Thu 6/25/20								
156		VERJA MALLA CICLONICA	2 days	Tue 3/3/20	Wed 3/4/20								
157		VERJA DE MALLA CICLONICA CON 3 LINEAS BLOCK	2 days	Tue 3/3/20	Wed 3/4/20								
158		COLUMNA C2 ( 0.25 X 0.25 )- 4.75 (INC. ZAPATA)	2 days	Tue 3/3/20	Wed 3/4/20								
159		COLUMNA C1 (0.15 X 0.15 ) -8.75	2 days	Tue 3/3/20	Wed 3/4/20								
160		PUERTA MALLA CICLONICA (4 M)	2 days	Tue 3/3/20	Wed 3/4/20								
161		LOGOY LETRERO DE INAPA	2 days	Tue 3/3/20	Wed 3/4/20								
162		SUMINISTRO Y COLOC. MATERIAL P/ RELLENO	2 days	Tue 3/3/20	Wed 3/4/20								
163		EMBELLECIMIENTO C/ GRAVILLA	2 days	Tue 3/3/20	Wed 3/4/20								
164		CASETA DE MATERIALES	2 days	Tue 3/3/20	Wed 3/4/20								
165		LIMPIEZA FINAL	1 day	Tue 3/3/20	Tue 3/3/20								
166		<b>EQUIPAMIENTO A NUEVOS POZOS</b>	<b>23 days</b>	<b>Thu 3/5/20</b>	<b>Mon 4/6/20</b>	<b>156</b>							
167		<b>ELECTRIFICACION PRIMARIA (POZO 2 )</b>	<b>4 days</b>	<b>Thu 3/5/20</b>	<b>Tue 3/10/20</b>								
168		POSTES HAV-12-500 DAN	4 days	Thu 3/5/20	Tue 3/10/20								
169		ESTRUCTURA MT-307	4 days	Thu 3/5/20	Tue 3/10/20								
170		ESTRUCTURA HA-100B	4 days	Thu 3/5/20	Tue 3/10/20								
171		ESTRUCTURA PR-101	4 days	Thu 3/5/20	Tue 3/10/20								
172		TRANSFORMADOR TIPO POSTE, 50 KVA, MONOFASICO, 7.2/12.5-240/480 V, SUMERGIDO EN ACEITE	4 days	Thu 3/5/20	Tue 3/10/20								

Project: campo de pozos azua  
Date: Fri 9/18/20

Task		Project Summary		Manual Task		Start-only		Deadline	
Split		Inactive Task		Duration-only		Finish-only		Progress	
Milestone		Inactive Milestone		Manual Summary Rollup		External Tasks		Manual Progress	
Summary		Inactive Summary		Manual Summary		External Milestone			



ID	Task	Task Name	Duration	Start	Finish	Predecessors	Half 1, 2019	Half 2, 2019	Half 1, 2020	Half 2, 2020	Half 1, 2021	Half 2, 2021	Half 1, 2022
173		CUT-OUT, 200 AMP. 15 KV.	4 days	Thu 3/5/20	Tue 3/10/20								
174		APARTARRAYO DE 9 KV	4 days	Thu 3/5/20	Tue 3/10/20								
175		ALAMBRE AAAC No. 2/0	4 days	Thu 3/5/20	Tue 3/10/20								
176		GRAPA CALIENTE, No. 2/0	4 days	Thu 3/5/20	Tue 3/10/20								
177		PLATAFORMA EN MADERA PARA MONTAR TRANSFORMADORES.	4 days	Thu 3/5/20	Tue 3/10/20								
178		MANO DE OBRA ELÉCTRICA PRIMARIA (20%)	4 days	Thu 3/5/20	Tue 3/10/20								
179		HOYO PARA POSTES	4 days	Thu 3/5/20	Tue 3/10/20								
180		HOYO PARA VIENTOS	4 days	Thu 3/5/20	Tue 3/10/20								
181		INSTALACION DE POSTES	4 days	Thu 3/5/20	Tue 3/10/20								
182		<b>ALIMENTACION SECUNDARIA</b>	<b>4 days</b>	<b>Wed 3/11/20</b>	<b>Mon 3/16/20</b>	<b>167</b>							
183		ALAMBRE THW # 4/0	4 days	Wed 3/11/20	Mon 3/16/20								
184		ALAMBRE THW # 2/0	4 days	Wed 3/11/20	Mon 3/16/20								
185		TUBO PVC 3" X 10 PIES	4 days	Wed 3/11/20	Mon 3/16/20								
186		TUBO IMC 3" X 10 PIES, CON ABRAZADERA Y COUPLING	4 days	Wed 3/11/20	Mon 3/16/20								
187		CONDULET IMC 3"	4 days	Wed 3/11/20	Mon 3/16/20								
188		CURVA PVC 3"	4 days	Wed 3/11/20	Mon 3/16/20								
189		TUBO LIQUIT- TIGHT 3"	4 days	Wed 3/11/20	Mon 3/16/20								
190		CONECTORES PARA ALAMBRE No. 4/0, TIPO PERNO PARTIDO	4 days	Wed 3/11/20	Mon 3/16/20								
191		AUTOTRANSFORMADOR, PARA MOTOR DE 100 HP, 460 V, TRIFASICO, 60 HZ, INCLUYE, BREAKERS, MONITOR DE FASE PARA ALTO Y BAJO VOLTAJE, SENSOR TERMICO, BOTONERA DE ARRANQUE Y PARADA Y CUBIERTA NEMA 3R.	4 days	Wed 3/11/20	Mon 3/16/20								
192		MAIN BREAKER ENCLOUSURE 350/3 AMP.	4 days	Wed 3/11/20	Mon 3/16/20								
193		CONECTOR RECTO L.T. 3"	4 days	Wed 3/11/20	Mon 3/16/20								
194		CONECTOR CURVO L.T. 3"	4 days	Wed 3/11/20	Mon 3/16/20								
195		ABRAZADERA PARA TUBERIA EMT 3"	4 days	Wed 3/11/20	Mon 3/16/20								
196		MANO DE OBRA ALIMENTACION SUCUNDARIA (30%)	4 days	Wed 3/11/20	Mon 3/16/20								
197		INSTALACION HIDRAULICA	15 days	Tue 3/17/20	Mon 4/6/20	182							

Project: campo de pozos azua  
Date: Fri 9/18/20

Task		Project Summary		Manual Task		Start-only		Deadline	
Split		Inactive Task		Duration-only		Finish-only		Progress	
Milestone		Inactive Milestone		Manual Summary Rollup		External Tasks		Manual Progress	
Summary		Inactive Summary		Manual Summary		External Milestone			

ID	Task	Task Name	Duration	Start	Finish	Predecessors	Half 1, 2019	Half 2, 2019	Half 1, 2020	Half 2, 2020	Half 1, 2021	Half 2, 2021	Half 1, 2022
198		SUMINISTRO DE ELECTROBOMBA CENTRÍFUGA VERTICAL, TIPO TURBINA DE 600 GPM CONTRA 440 PIES DE TDH, 1,750 RPM, CON CABEZAL DE DESCARGA 8", 150 PIES DE COLUMNAS DE 8", CON SUS EJES, COUPLING Y GUIAS, MOTOR ELECT. VERTICAL DE EJE HUECO, 100 HP, 460V, 3Ø, 60 HZ,	15 days	Tue 3/17/20	Mon 4/6/20								
199		VALVULA DE COMPUERTA 6", VASTAGO FIJO, 250 PSI H.F.PLATILLADA, JUNTAS DE GOMA Y TORNILLOS	15 days	Tue 3/17/20	Mon 4/6/20								
200		VALVULA CHECK HORIZONTAL CON LIMITADOR DE CAUDAL Ø6", 250 PSI, H.F.	5 days	Tue 3/17/20	Mon 3/23/20								
201		VALVULA DE AIRE DE Ø1", COMPLETA .	5 days	Tue 3/17/20	Mon 3/23/20								
202		NIPLE Ø6" X 12", PLATILLADO EN UN EXTREMOS	5 days	Tue 3/17/20	Mon 3/23/20								
203		NIPLE Ø4" X 12", PLATILLADO EN UN EXTREMOS	5 days	Tue 3/17/20	Mon 3/23/20								
204		TEE Ø6" X 6" X 4", PLATILLADO EN TRES EXTREMOS	5 days	Tue 3/17/20	Mon 3/23/20								
205		JUNTAS Ø6" TIPO DRESSER ( 150 PSI)	5 days	Tue 3/17/20	Mon 3/23/20								
206		ZEETA Ø6" X 3 M	5 days	Tue 3/17/20	Mon 3/23/20								
207		INSTALACION MANOMETRICA COMPLETA, CON MANOMETRO DE 0-300 PSI, SUMERGIDO EN GLICERINA	5 days	Tue 3/17/20	Mon 3/23/20								
208		VALVULA DE COMPUERTA 4", VASTAGO FIJO, 250 PSI H.F PLATILLADA, JUNTAS DE GOMA Y TORNILLOS	5 days	Tue 3/17/20	Mon 3/23/20								
209		TUBO Ø4" DE ACERO SCH-80	5 days	Tue 3/17/20	Mon 3/23/20								
210		NIPLE 12 X 24 PLATILLADO EN LOS EXTREMOS	3 days	Tue 3/17/20	Thu 3/19/20								
211		MANO DE OBRA INSTALACION ELECTROBOMBA, 10%	15 days	Tue 3/17/20	Mon 4/6/20								
212		<b>CONSTRUCCION Y EQUIPAMIENTO DE POZO 3</b>	<b>19 days</b>	<b>Tue 4/7/20</b>	<b>Fri 5/1/20</b>	<b>166</b>							
213		GARITA PARA OPERADOR	9 days	Tue 4/7/20	Fri 4/17/20								
214		PRELIMINARES	1 day	Tue 4/7/20	Tue 4/7/20								
215		REPLANTEO	1 day	Tue 4/7/20	Tue 4/7/20								
216		MOVIMIENTO DE TIERRA	1 day	Tue 4/7/20	Tue 4/7/20								
217		HORMIGÓN ARMADO	2 days	Wed 4/8/20	Thu 4/9/20	214							
218		ZAPATA DE MUROS 0.45 X 0 .25 (0.74 QQ)	2 days	Wed 4/8/20	Thu 4/9/20								
219		H.A. VIGA DE AMARRE 0.15 X 0.20 (4.36 QQ)	2 days	Wed 4/8/20	Thu 4/9/20								

Project: campo de pozos azua  
Date: Fri 9/18/20

Task		Project Summary		Manual Task		Start-only		Deadline	
Split		Inactive Task		Duration-only		Finish-only		Progress	
Milestone		Inactive Milestone		Manual Summary Rollup		External Tasks		Manual Progress	
Summary		Inactive Summary		Manual Summary		External Milestone			

ID	Task	Task Name	Duration	Start	Finish	Predecessors	Half 1, 2019	Half 2, 2019	Half 1, 2020	Half 2, 2020	Half 1, 2021	Half 2, 2021	Half 1, 2022
220		H.A. LOSA DE TECHO , E= 0.10 (1.56 QQ)	2 days	Wed 4/8/20	Thu 4/9/20								
221		MURO DE BLOCKS	2 days	Fri 4/10/20	Mon 4/13/20	217							
222		BLOCK 6"	2 days	Fri 4/10/20	Mon 4/13/20								
223		BLOCK CALADO	2 days	Fri 4/10/20	Mon 4/13/20								
224		<b>TERMINACIÓN DE SUPERFICIE</b>	<b>4 days</b>	<b>Tue 4/14/20</b>	<b>Fri 4/17/20</b>	<b>221</b>							
225		PAÑETE INTERIOR(INCLUYE PAÑETE DE TECHO)	4 days	Tue 4/14/20	Fri 4/17/20								
226		PAÑETE EXTERIOR	4 days	Tue 4/14/20	Fri 4/17/20								
227		PAÑETE INTERIOR(INCLUYE PAÑETE DE TECHO)	4 days	Tue 4/14/20	Fri 4/17/20								
228		FINO DE TECHO	4 days	Tue 4/14/20	Fri 4/17/20								
229		FRAGUACHE EN TECHO	4 days	Tue 4/14/20	Fri 4/17/20								
230		ACERA PERIMETRAL 0.80M	4 days	Tue 4/14/20	Fri 4/17/20								
231		CANTOS Y MOCHETAS	4 days	Tue 4/14/20	Fri 4/17/20								
232		IMPERMEABILIZANTE DE TECHO	4 days	Tue 4/14/20	Fri 4/17/20								
233		REVESTIMIENTO PARED BANO	4 days	Tue 4/14/20	Fri 4/17/20								
234		PISOS H.S PULIDO	4 days	Tue 4/14/20	Fri 4/17/20								
235		ZABALETA	4 days	Tue 4/14/20	Fri 4/17/20								
236		<b>REVESTIMIENTO EN PAREDES</b>	<b>2 days</b>	<b>Mon 4/20/20</b>	<b>Tue 4/21/20</b>	<b>224</b>							
237		CERÁMICA CRIOLLA EN BAÑO (INC. TODOS LAS PAREDES DEL BAÑO )	2 days	Mon 4/20/20	Tue 4/21/20								
238		INSTALACION SANITARIA	1 day	Wed 4/22/20	Wed 4/22/20	236							
239		INODORO BLANCO SENCILLO	1 day	Wed 4/22/20	Wed 4/22/20								
240		LAVAMANO BLANCO PEQUEÑO	1 day	Wed 4/22/20	Wed 4/22/20								
241		DESAGUE DE PISO	1 day	Wed 4/22/20	Wed 4/22/20								
242		COLUMNA DE VENTILACION 3"	1 day	Wed 4/22/20	Wed 4/22/20								
243		GALERIA DE INFILTRACION	1 day	Wed 4/22/20	Wed 4/22/20								
244		CAMARA DE INSPECCION	1 day	Wed 4/22/20	Wed 4/22/20								
245		CAMARA SEPTICA	1 day	Wed 4/22/20	Wed 4/22/20								
246		FILTRANTE 4"	1 day	Wed 4/22/20	Wed 4/22/20								
247		SUM. E INSTALACION TINACO 250GLS	1 day	Wed 4/22/20	Wed 4/22/20								
248		TUBERIAS Y PIEZAS AGUA POTABLE	1 day	Wed 4/22/20	Wed 4/22/20								
249		TUBERIAS Y PIEZAS AGUAS RESIDUALES	1 day	Wed 4/22/20	Wed 4/22/20								
250		M.O. PLOMERIA GENERAL	1 day	Wed 4/22/20	Wed 4/22/20								
251		PINTURA	3 days	Thu 4/23/20	Mon 4/27/20	238							
252		PINTURA ACRÍLICA	3 days	Thu 4/23/20	Mon 4/27/20								
253		PUERTAS Y VENTANAS	1 day	Tue 4/28/20	Tue 4/28/20	251							
254		PUERTAS EVERDOR( INCLUYE LLAVIN E INSTALACION )( 2.10 X 1.50 M)	1 day	Tue 4/28/20	Tue 4/28/20								
255		VENTANA DE ALUMINIO 0.60 X0.60	1 day	Tue 4/28/20	Tue 4/28/20								

Project: campo de pozos azua  
Date: Fri 9/18/20

Task		Project Summary		Manual Task		Start-only		Deadline	
Split		Inactive Task		Duration-only		Finish-only		Progress	
Milestone		Inactive Milestone		Manual Summary Rollup		External Tasks		Manual Progress	
Summary		Inactive Summary		Manual Summary		External Milestone			



ID	Task	Task Name	Duration	Start	Finish	Predecessors	Half 1, 2019	Half 2, 2019	Half 1, 2020	Half 2, 2020	Half 1, 2021	Half 2, 2021	Half 1, 2022
256		INSTALACIONES ELÉCTRICAS	3 days	Wed 4/29/20	Fri 5/1/20	253							
257		SALIDA CENITAL	3 days	Wed 4/29/20	Fri 5/1/20								
258		INTERRUPTOR SENCILLO	3 days	Wed 4/29/20	Fri 5/1/20								
259		TOMACORRIENTES DOBLE, 120V	3 days	Wed 4/29/20	Fri 5/1/20								
260		PANEL DE DISTRIBUCION 4/8 CIRCUITOS (INC. BREAKERS)	3 days	Wed 4/29/20	Fri 5/1/20								
261		ORNAMENTACION EN VERJA PERIMETRAL	2 days	Mon 11/18/19	Tue 11/19/19								
262		LIMPIEZA FINAL	2 days	Mon 11/18/19	Tue 11/19/19								
263		CASETA DE BOMBEO CON TECHO DESLIZABLE POZO.3	7 days	Mon 4/20/20	Tue 4/28/20	213							
264		<b>CASETA DE BOMBEO CON TECHO DESLIZABLE</b>	<b>2 days</b>	<b>Mon 4/20/20</b>	<b>Tue 4/21/20</b>								
265		REPLANTEO	2 days	Mon 4/20/20	Tue 4/21/20								
266		MOVIMIENTO DE TIERRA	2 days	Mon 4/20/20	Tue 4/21/20								
267		<b>HORMIGON ARMADO EN: FC'=240 KG/CM2</b>	<b>2 days</b>	<b>Wed 4/22/20</b>	<b>Thu 4/23/20</b>	<b>265</b>							
268		ZAPATA DE MURO 0.36 QQ FC =180 KG/CM2	2 days	Wed 4/22/20	Thu 4/23/20								
269		VIGA 0.20 X 0.30 3.56 QQ	2 days	Wed 4/22/20	Thu 4/23/20								
270		LOSA DE TECHO 0.10- 0.48 QQ	2 days	Wed 4/22/20	Thu 4/23/20								
271		DINTEL 0.20 X 0.15 -3.89 QQ	2 days	Wed 4/22/20	Thu 4/23/20								
272		RAMPA D/ ACCESO A 0.05	2 days	Wed 4/22/20	Thu 4/23/20								
273		SOPORTE DE CORREDERA 0.89	2 days	Wed 4/22/20	Thu 4/23/20								
274		BASE DE MOTOR Y BOMBEO	2 days	Wed 4/22/20	Thu 4/23/20								
275		COLUMNA 0.20 X 0.15- 4.58 QQ/M3	2 days	Wed 4/22/20	Thu 4/23/20								
276		MUROS	3 days	Fri 4/24/20	Tue 4/28/20	267							
277		MURO BLOCK 6" (B.N.P.)	3 days	Fri 4/24/20	Tue 4/28/20								
278		MURO BLOCK 6" (S.N.P.)	3 days	Fri 4/24/20	Tue 4/28/20								
279		MURO BLOCK CALADOS	3 days	Fri 4/24/20	Tue 4/28/20								
280		TERMINACION DE SUPERFICIE:	2 days	Wed 4/29/20	Thu 4/30/20	276							
281		PAÑETE EXTERIOR	2 days	Wed 4/29/20	Thu 4/30/20								
282		FINO LOSA TECHO	2 days	Wed 4/29/20	Thu 4/30/20								
283		CANTOS Y MOCHETAS	2 days	Wed 4/29/20	Thu 4/30/20								
284		ANTEPECHO DE BLOQUES (UNA LINEA DE BLOCK)	2 days	Wed 4/29/20	Thu 4/30/20								
285		PINTURA MANTENIMIENTO	2 days	Wed 4/29/20	Thu 4/30/20								
286		PISO HORMIGON PULIDO	2 days	Wed 4/29/20	Thu 4/30/20								
287		ZABALETA	2 days	Wed 4/29/20	Thu 4/30/20								
288		PORTAJE	1 day	Fri 5/1/20	Fri 5/1/20	280							
289		PUERTA METALICA POSTERIOR (1.00M X 2.10 M)	1 day	Fri 5/1/20	Fri 5/1/20								
290		VENTANA DE BLOCKS CALADOS	1 day	Fri 5/1/20	Fri 5/1/20								
291		PUERTA METALICA FRONTAL (4.00M X 2.70 M)	1 day	Fri 5/1/20	Fri 5/1/20								

Project: campo de pozos azua  
Date: Fri 9/18/20

Task		Project Summary		Manual Task		Start-only		Deadline	
Split		Inactive Task		Duration-only		Finish-only		Progress	
Milestone		Inactive Milestone		Manual Summary Rollup		External Tasks		Manual Progress	
Summary		Inactive Summary		Manual Summary		External Milestone			

ID	Task	Task Name	Duration	Start	Finish	Predecessors	Half 1, 2019	Half 2, 2019	Half 1, 2020	Half 2, 2020	Half 1, 2021	Half 2, 2021	Half 1, 2022
292		INSTALACIONES ELECTRICAS	3 days	Mon 5/4/20	Wed 5/6/20	288							
293		ENTRADA GENERAL	3 days	Mon 5/4/20	Wed 5/6/20								
294		SALIDA CENTRALES	3 days	Mon 5/4/20	Wed 5/6/20								
295		INTERRUPTORES SENCILLOS	3 days	Mon 5/4/20	Wed 5/6/20								
296		TOMACORRIENTES SENCILLOS	3 days	Mon 5/4/20	Wed 5/6/20								
297		ACERA EXT. DE 0.80 DE ANCHO	2 days	Mon 11/18/19	Tue 11/19/19								
298		<b>TECHO DESLIZABLE (4.00M X5.00 M)</b>	<b>3 days</b>	<b>Thu 5/7/20</b>	<b>Mon 5/11/20</b>	<b>292</b>							
299		ANGULARES DE 11/2 X 3/16 P/ TIJERILLAS	3 days	Thu 5/7/20	Mon 5/11/20								
300		ALUZINC	3 days	Thu 5/7/20	Mon 5/11/20								
301		ZINC LISO	3 days	Thu 5/7/20	Mon 5/11/20								
302		ANGULAR 2" X 2" X 1/4"	3 days	Thu 5/7/20	Mon 5/11/20								
303		CHANNEL 4" X 1/2"	3 days	Thu 5/7/20	Mon 5/11/20								
304		CAJA DE BOLA	3 days	Thu 5/7/20	Mon 5/11/20								
305		CABALLETE	3 days	Thu 5/7/20	Mon 5/11/20								
306		SOLDADURA Y ELECTRODOS	3 days	Thu 5/7/20	Mon 5/11/20								
307		MANO DE OBRA	3 days	Thu 5/7/20	Mon 5/11/20								
308		VERJA MALLA CICLONICA	7 days	Tue 5/12/20	Wed 5/20/20	298							
309		VERJA DE MALLA CICLONICA CON 3 LINEAS BLOCK	7 days	Tue 5/12/20	Wed 5/20/20								
310		COLUMNA C2 ( 0.25 X 0.25 )- 4.75 (INC. ZAPATA)	7 days	Tue 5/12/20	Wed 5/20/20								
311		COLUMNA C1 (0.15 X 0.15 ) -8.75	7 days	Tue 5/12/20	Wed 5/20/20								
312		PUERTA MALLA CICLONICA (4 M)	7 days	Tue 5/12/20	Wed 5/20/20								
313		LOGOY LETRERO DE INAPA	7 days	Mon 11/18/19	Tue 11/26/19								
314		SUMINISTRO Y COLOC. MATERIAL P/ RELLENO	7 days	Mon 11/18/19	Tue 11/26/19								
315		EMBELLECIMIENTO C/ GRAVILLA	7 days	Mon 11/18/19	Tue 11/26/19								
316		CASETA DE MATERIALES	2 days	Mon 11/18/19	Tue 11/19/19								
317		LIMPIEZA FINAL	7 days	Mon 11/18/19	Tue 11/26/19								
318		<b>EQUIPAMIENTO A NUEVOS POZOS</b>	<b>7 days</b>	<b>Thu 5/21/20</b>	<b>Fri 5/29/20</b>	<b>308</b>							
319		ELECTRIFICACION PRIMARIA (POZO 3 )	7 days	Thu 5/21/20	Fri 5/29/20								
320		POSTES HAV-12-500 DAN	7 days	Thu 5/21/20	Fri 5/29/20								
321		ESTRUCTURA MT-307	7 days	Thu 5/21/20	Fri 5/29/20								
322		ESTRUCTURA HA-100B	7 days	Thu 5/21/20	Fri 5/29/20								
323		ESTRUCTURA PR-101	7 days	Thu 5/21/20	Fri 5/29/20								
324		TRANSFORMADOR TIPO POSTE, 50 KVA, MONOFASICO, 7.2/12.5-240/480 V, SUMERGIDO EN ACEITE	7 days	Thu 5/21/20	Fri 5/29/20								
325		CUT-OUT, 200 AMP. 15 KV.	7 days	Thu 5/21/20	Fri 5/29/20								
326		APARTARRAYO DE 9 KV	7 days	Thu 5/21/20	Fri 5/29/20								
327		ALAMBRE AAAC No. 2/0	7 days	Thu 5/21/20	Fri 5/29/20								

Project: campo de pozos azua  
Date: Fri 9/18/20

Task		Project Summary		Manual Task		Start-only		Deadline	
Split		Inactive Task		Duration-only		Finish-only		Progress	
Milestone		Inactive Milestone		Manual Summary Rollup		External Tasks		Manual Progress	
Summary		Inactive Summary		Manual Summary		External Milestone			

ID	Task	Task Name	Duration	Start	Finish	Predecessors	Half 1, 2019	Half 2, 2019	Half 1, 2020	Half 2, 2020	Half 1, 2021	Half 2, 2021	Half 1, 2022
328		GRAPA CALIENTE, No. 2/0	7 days	Thu 5/21/20	Fri 5/29/20								
329		PLATAFORMA EN MADERA PARA MONTAR TRANSFORMADORES.	7 days	Thu 5/21/20	Fri 5/29/20								
330		MANO DE OBRA ELÉCTRICA PRIMARIA (20%)	7 days	Thu 5/21/20	Fri 5/29/20								
331		HOYO PARA POSTES	7 days	Thu 5/21/20	Fri 5/29/20								
332		HOYO PARA VIENTOS	7 days	Thu 5/21/20	Fri 5/29/20								
333		INSTALACION DE POSTES	7 days	Thu 5/21/20	Fri 5/29/20								
334		ALIMENTACION SECUNDARIA	4 days	Mon 6/1/20	Thu 6/4/20	319							
335		ALAMBRE THW # 4/0	4 days	Mon 6/1/20	Thu 6/4/20								
336		ALAMBRE THW # 2/0	4 days	Mon 6/1/20	Thu 6/4/20								
337		TUBO PVC 3" X 10 PIES	4 days	Mon 6/1/20	Thu 6/4/20								
338		TUBO IMC 3" X 10 PIES, CON ABRAZADERA Y COUPLING	4 days	Mon 6/1/20	Thu 6/4/20								
339		CONDULET IMC 3"	4 days	Mon 6/1/20	Thu 6/4/20								
340		CURVA PVC 3"	4 days	Mon 6/1/20	Thu 6/4/20								
341		TUBO LIQUIT- TIGHT 3" X 10 PIES	4 days	Mon 6/1/20	Thu 6/4/20								
342		CONECTORES PARA ALAMBRE No. 4/0, TIPO PERNO PARTIDO	4 days	Mon 6/1/20	Thu 6/4/20								
343		AUTOTRANSFORMADOR, PARA MOTOR DE 100 HP, 460 V, TRIFASICO, 60 HZ, INCLUYE, BREAKERS, MONITOR DE FASE PARA ALTO Y BAJO VOLTAJE, SENSOR TERMICO, BOTONERA DE ARRANQUE Y PARADA Y CUBIERTA NEMA 3R.	4 days	Mon 6/1/20	Thu 6/4/20								
344		MAIN BREAKER ENCLOUSURE 350/3 AMP.	4 days	Mon 6/1/20	Thu 6/4/20								
345		CONECTOR RECTO L.T. 21/2"	4 days	Mon 6/1/20	Thu 6/4/20								
346		CONECTOR CURVO L.T. 21/2"	4 days	Mon 6/1/20	Thu 6/4/20								
347		ABRAZADERA PARA TUBERIA EMT 21/2"	4 days	Mon 6/1/20	Thu 6/4/20								
348		MANO DE OBRA ALIMENTACION SUCUNDARIA (30%)	4 days	Mon 6/1/20	Thu 6/4/20								
349		INSTALACION HIDRAULICA	15 days	Fri 6/5/20	Thu 6/25/20	334							
350		SUMINISTRO DE ELECTROBOMBA CENTRÍFUGA VERTICAL, TIPO TURBINA DE 600 GPM CONTRA 440 PIES DE TDH, 1,750 RPM, CON CABEZAL DE DESCARGA 8", 150 PIES DE COLUMNAS DE 8", CON SUS EJES, COUPLING Y GUIAS, MOTOR ELECT. VERTICAL DE EJE HUECO, 100 HP, 460V, 3Ø, 60 HZ,	15 days	Fri 6/5/20	Thu 6/25/20								
351		VALVULA DE COMPUERTA 6", VASTAGO FIJO, 250 PSI H.F.(MARCA MULLER O SIMILAR) PLATILLADA, JUNTAS DE GOMA Y TORNILLOS	15 days	Fri 6/5/20	Thu 6/25/20								

Project: campo de pozos azua  
Date: Fri 9/18/20

Task		Project Summary		Manual Task		Start-only		Deadline	
Split		Inactive Task		Duration-only		Finish-only		Progress	
Milestone		Inactive Milestone		Manual Summary Rollup		External Tasks		Manual Progress	
Summary		Inactive Summary		Manual Summary		External Milestone			

ID	Task	Task Name	Duration	Start	Finish	Predecessors	Half 1, 2019	Half 2, 2019	Half 1, 2020	Half 2, 2020	Half 1, 2021	Half 2, 2021	Half 1, 2022
352		VALVULA CHECK HORIZONTAL CON LIMITADOR DE CAUDAL Ø6", 250 PSI, H.F.	5 days	Fri 6/5/20	Thu 6/11/20								
353		VALVULA DE AIRE DE Ø1", COMPLETA .	5 days	Fri 6/5/20	Thu 6/11/20								
354		NIPLE Ø6" X 12", PLATILLADO EN UN EXTREMOS	5 days	Fri 6/5/20	Thu 6/11/20								
355		NIPLE Ø4" X 12", PLATILLADO EN UN EXTREMOS	5 days	Fri 6/5/20	Thu 6/11/20								
356		TEE Ø6" X 6" X 4", PLATILLADO EN TRES EXTREMOS	5 days	Fri 6/5/20	Thu 6/11/20								
357		JUNTAS Ø6" TIPO DRESSER	5 days	Fri 6/5/20	Thu 6/11/20								
358		ZEETA Ø6" X 3"	5 days	Fri 6/5/20	Thu 6/11/20								
359		INSTALACION MANOMETRICA COMPLETA, CON MANOMETRO DE 3-300 PSI, SUMERGIDO EN GLICERINA	5 days	Fri 6/5/20	Thu 6/11/20								
360		VALVULA DE COMPUERTA 4", VASTAGO FIJO, 250 PSI H.F PLATILLADA, JUNTAS DE GOMA Y TORNILLOS	5 days	Fri 6/5/20	Thu 6/11/20								
361		TUBO Ø4" DE ACERO SCH-80	5 days	Fri 6/5/20	Thu 6/11/20								
362		NIPLE 12 X 24 PLATILLADO EN LOS EXTREMOS	3 days	Fri 6/5/20	Tue 6/9/20								
363		MANO DE OBRA INSTALACION ELECTROBOMBA, 10%	15 days	Fri 6/5/20	Thu 6/25/20								
364		<b>CONSTRUCCION Y EQUIPAMIENTO DE POZO 7</b>	<b>17 days</b>	<b>Mon 6/1/20</b>	<b>Tue 6/23/20</b>	<b>319</b>							
365		GARITA PARA OPERADOR	8 days	Mon 6/1/20	Wed 6/10/20								
366		PRELIMINARES	1 day	Mon 6/1/20	Mon 6/1/20								
367		REPLANTEO	1 day	Mon 6/1/20	Mon 6/1/20								
368		MOVIMIENTO DE TIERRA	1 day	Mon 6/1/20	Mon 6/1/20								
369		HORMIGÓN ARMADO	2 days	Tue 6/2/20	Wed 6/3/20	367							
370		ZAPATA DE MUROS 0.45 X 0.25 (0.74 QQ)	2 days	Tue 6/2/20	Wed 6/3/20								
371		H.A. VIGA DE AMARRE 0.15 X 0.20 (4.36 QQ)	2 days	Tue 6/2/20	Wed 6/3/20								
372		H.A. LOSA DE TECHO , E= 0.10 (1.56 QQ)	2 days	Tue 6/2/20	Wed 6/3/20								
373		MURO DE BLOCKS	2 days	Thu 6/4/20	Fri 6/5/20	369							
374		BLOCK 6"	2 days	Thu 6/4/20	Fri 6/5/20								
375		BLOCK CALADO	2 days	Thu 6/4/20	Fri 6/5/20								
376		<b>TERMINACIÓN DE SUPERFICIE</b>	<b>3 days</b>	<b>Mon 6/8/20</b>	<b>Wed 6/10/20</b>	<b>373</b>							
377		PAÑETE INTERIOR(INCLUYE PAÑETE DE TECHO)	3 days	Mon 6/8/20	Wed 6/10/20								
378		PAÑETE EXTERIOR	3 days	Mon 6/8/20	Wed 6/10/20								
379		PAÑETE INTERIOR(INCLUYE PAÑETE DE TECHO)	3 days	Mon 6/8/20	Wed 6/10/20								
380		FINO DE TECHO	3 days	Mon 6/8/20	Wed 6/10/20								
381		FRAGUACHE EN TECHO	3 days	Mon 6/8/20	Wed 6/10/20								
382		ACERA PERIMETRAL 0.80M	3 days	Mon 6/8/20	Wed 6/10/20								

Project: campo de pozos azua  
Date: Fri 9/18/20

Task		Project Summary		Manual Task		Start-only		Deadline	
Split		Inactive Task		Duration-only		Finish-only		Progress	
Milestone		Inactive Milestone		Manual Summary Rollup		External Tasks		Manual Progress	
Summary		Inactive Summary		Manual Summary		External Milestone			

ID	Task	Task Name	Duration	Start	Finish	Predecessors	Half 1, 2019	Half 2, 2019	Half 1, 2020	Half 2, 2020	Half 1, 2021	Half 2, 2021	Half 1, 2022
383		CANTOS Y MOCHETAS	3 days	Mon 6/8/20	Wed 6/10/20								
384		IMPERMEABILIZANTE DE TECHO	3 days	Mon 6/8/20	Wed 6/10/20								
385		REVESTIMIENTO PARED BANO	3 days	Mon 6/8/20	Wed 6/10/20								
386		PISOS H.S PULIDO	3 days	Mon 6/8/20	Wed 6/10/20								
387		ZABALETA	3 days	Mon 6/8/20	Wed 6/10/20								
388		REVESTIMIENTO EN PAREDES	2 days	Thu 6/11/20	Fri 6/12/20	376							
389		CERÁMICA CRIOLLA EN BAÑO (INC. TODOS LAS PAREDES DEL BAÑO )	2 days	Thu 6/11/20	Fri 6/12/20								
390		INSTALACION SANITARIA	1 day	Mon 6/15/20	Mon 6/15/20	389							
391		INODORO BLANCO SENCILLO	1 day	Mon 6/15/20	Mon 6/15/20								
392		LAVAMANO BLANCO PEQUEÑO	1 day	Mon 6/15/20	Mon 6/15/20								
393		DESAGUE DE PISO	1 day	Mon 6/15/20	Mon 6/15/20								
394		COLUMNA DE VENTILACION 3"	1 day	Mon 6/15/20	Mon 6/15/20								
395		GALERIA DE INFILTRACION	1 day	Mon 6/15/20	Mon 6/15/20								
396		CAMARA DE INSPECCION	1 day	Mon 6/15/20	Mon 6/15/20								
397		CAMARA SEPTICA	1 day	Mon 6/15/20	Mon 6/15/20								
398		FILTRANTE 4"	1 day	Mon 6/15/20	Mon 6/15/20								
399		SUM. E INSTALACION TINACO 250GLS	1 day	Mon 6/15/20	Mon 6/15/20								
400		TUBERIAS Y PIEZAS AGUA POTABLE	1 day	Mon 6/15/20	Mon 6/15/20								
401		TUBERIAS Y PIEZAS AGUAS RESIDUALES	1 day	Mon 6/15/20	Mon 6/15/20								
402		M.O. PLOMERIA GENERAL	1 day	Mon 6/15/20	Mon 6/15/20								
403		PINTURA	2 days	Tue 6/16/20	Wed 6/17/20	390							
404		PINTURA ACRÍLICA	2 days	Tue 6/16/20	Wed 6/17/20								
405		PUERTAS Y VENTANAS	1 day	Thu 6/18/20	Thu 6/18/20	403							
406		PUERTAS EVERDOR( INCLUYE LLAVIN E INSTALACION )( 2.10 X 1.50 M)	1 day	Thu 6/18/20	Thu 6/18/20								
407		VENTANA DE ALUMINIO 0.60 X0.60	1 day	Thu 6/18/20	Thu 6/18/20								
408		INSTALACIONES ELÉCTRICAS	3 days	Fri 6/19/20	Tue 6/23/20	405							
409		SALIDA CENITAL	3 days	Fri 6/19/20	Tue 6/23/20								
410		INTERRUPTOR SENCILLO	3 days	Fri 6/19/20	Tue 6/23/20								
411		TOMACORRIENTES DOBLE, 120V	3 days	Fri 6/19/20	Tue 6/23/20								
412		PANEL DE DISTRIBUCION 4/8 CIRCUITOS (INC. BREAKERS)	3 days	Fri 6/19/20	Tue 6/23/20								
413		ORNAMENTACION EN VERJA PERIMETRAL	2 days	Mon 11/18/19	Tue 11/19/19								
414		LIMPIEZA FINAL	2 days	Mon 11/18/19	Tue 11/19/19								
415		<b>CASETA DE BOMBEO CON TECHO DESLIZABLE POZO.3A</b>	<b>1 day</b>	<b>Wed 6/24/20</b>	<b>Wed 6/24/20</b>	<b>408</b>							
416		REPLANTEO	1 day	Wed 6/24/20	Wed 6/24/20								
417		MOVIMIENTO DE TIERRA	1 day	Wed 6/24/20	Wed 6/24/20								
418		<b>HORMIGON ARMADO EN: FC'=240 KG/CM2</b>	<b>2 days</b>	<b>Thu 6/25/20</b>	<b>Fri 6/26/20</b>	<b>416</b>							

Project: campo de pozos azua  
Date: Fri 9/18/20

Task		Project Summary		Manual Task		Start-only		Deadline	
Split		Inactive Task		Duration-only		Finish-only		Progress	
Milestone		Inactive Milestone		Manual Summary Rollup		External Tasks		Manual Progress	
Summary		Inactive Summary		Manual Summary		External Milestone			



ID	Task	Task Name	Duration	Start	Finish	Predecessors	Half 1, 2019	Half 2, 2019	Half 1, 2020	Half 2, 2020	Half 1, 2021	Half 2, 2021	Half 1, 2022
419		ZAPATA DE MURO 0.36 QQ FC =180 KG/CM2	2 days	Thu 6/25/20	Fri 6/26/20								
420		VIGA 0.20 X 0.30 3.56 QQ	2 days	Thu 6/25/20	Fri 6/26/20								
421		LOSA DE TECHO 0.10- 0.48 QQ	2 days	Thu 6/25/20	Fri 6/26/20								
422		DINTEL 0.20 X 0.15 -3.89 QQ	2 days	Thu 6/25/20	Fri 6/26/20								
423		RAMPA D/ ACCESO A 0.05	2 days	Thu 6/25/20	Fri 6/26/20								
424		SOPORTE DE CORREDERA 0.89	2 days	Thu 6/25/20	Fri 6/26/20								
425		BASE DE MOTOR Y BOMBEO	2 days	Thu 6/25/20	Fri 6/26/20								
426		COLUMNA 0.20 X 0.15- 4.58 QQ/M3	2 days	Thu 6/25/20	Fri 6/26/20								
427		MUROS	3 days	Mon 6/29/20	Wed 7/1/20	418							
428		MURO BLOCK 6" (B.N.P.)	3 days	Mon 6/29/20	Wed 7/1/20								
429		MURO BLOCK 6" (S.N.P.)	3 days	Mon 6/29/20	Wed 7/1/20								
430		MURO BLOCK CALADOS	3 days	Mon 6/29/20	Wed 7/1/20								
431		TERMINACION DE SUPERFICIE:	2 days	Thu 7/2/20	Fri 7/3/20	428							
432		PAÑETE EXTERIOR	2 days	Thu 7/2/20	Fri 7/3/20								
433		FINO LOSA TECHO	2 days	Thu 7/2/20	Fri 7/3/20								
434		CANTOS Y MOCHETAS	2 days	Thu 7/2/20	Fri 7/3/20								
435		ANTEPECHO DE BLOQUES (UNA LINEA DE BLOCK)	2 days	Thu 7/2/20	Fri 7/3/20								
436		PINTURA MANTENIMIENTO	2 days	Thu 7/2/20	Fri 7/3/20								
437		PISO HORMIGON PULIDO	2 days	Thu 7/2/20	Fri 7/3/20								
438		ZABALETA	2 days	Thu 7/2/20	Fri 7/3/20								
439		PORTAJE	3 days	Mon 7/6/20	Wed 7/8/20	431							
440		PUERTA METALICA POSTERIOR (1.00M X 2.10 M)	1 day	Mon 7/6/20	Mon 7/6/20								
441		VENTANA DE BLOCKS CALADOS	1 day	Mon 7/6/20	Mon 7/6/20								
442		PUERTA METALICA FRONTAL (4.00M X 2.70 M)	3 days	Mon 7/6/20	Wed 7/8/20								
443		INSTALACIONES ELECTRICAS	3 days	Thu 7/9/20	Mon 7/13/20	439							
444		ENTRADA GENERAL	3 days	Thu 7/9/20	Mon 7/13/20								
445		SALIDA CENTRALES	0.5 days	Thu 7/9/20	Thu 7/9/20								
446		INTERRUPTORES SENCILLOS	0.5 days	Thu 7/9/20	Thu 7/9/20								
447		TOMACORRIENTES SENCILLOS	0.5 days	Thu 7/9/20	Thu 7/9/20								
448		ACERA EXT. DE 0.80 DE ANCHO	0.5 days	Mon 11/18/19	Mon 11/18/19								
449		<b>TECHO DESLIZABLE (4.00M X5.00 M)</b>	<b>5 days</b>	<b>Tue 7/14/20</b>	<b>Mon 7/20/20</b>	<b>443</b>							
450		ANGULARES DE 11/2 X 3/16 P/ TIJERILLAS	5 days	Tue 7/14/20	Mon 7/20/20								
451		ALUZINC	5 days	Tue 7/14/20	Mon 7/20/20								
452		ZINC LISO	5 days	Tue 7/14/20	Mon 7/20/20								
453		ANGULAR 2" X 2" X 1/4"	5 days	Tue 7/14/20	Mon 7/20/20								
454		CHANNEL 4" X 1/2"	5 days	Tue 7/14/20	Mon 7/20/20								
455		CAJA DE BOLA	5 days	Tue 7/14/20	Mon 7/20/20								

Project: campo de pozos azua  
Date: Fri 9/18/20

Task		Project Summary		Manual Task		Start-only		Deadline	
Split		Inactive Task		Duration-only		Finish-only		Progress	
Milestone		Inactive Milestone		Manual Summary Rollup		External Tasks		Manual Progress	
Summary		Inactive Summary		Manual Summary		External Milestone			

ID	Task	Task Name	Duration	Start	Finish	Predecessors	Half 1, 2019	Half 2, 2019	Half 1, 2020	Half 2, 2020	Half 1, 2021	Half 2, 2021	Half 1, 2022
456		CABALLETE	5 days	Tue 7/14/20	Mon 7/20/20								
457		SOLDADURA Y ELECTRODOS	5 days	Tue 7/14/20	Mon 7/20/20								
458		MANO DE OBRA	5 days	Tue 7/14/20	Mon 7/20/20								
459		VERJA MALLA CICLONICA	4 days	Tue 7/21/20	Fri 7/24/20	449							
460		VERJA DE MALLA CICLONICA CON 3 LINEAS BLOCK	4 days	Tue 7/21/20	Fri 7/24/20								
461		COLUMNA C2 ( 0.25 X 0.25 )- 4.75 (INC. ZAPATA)	2 days	Tue 7/21/20	Wed 7/22/20								
462		COLUMNA C1 (0.15 X 0.15 ) -8.75	2 days	Tue 7/21/20	Wed 7/22/20								
463		PUERTA MALLA CICLONICA (4 M)	2 days	Tue 7/21/20	Wed 7/22/20								
464		LOGOY LETRERO DE INAPA	1 day	Mon 11/18/19	Mon 11/18/19								
465		SUMINISTRO Y COLOC. MATERIAL P/ RELLENO	1 day	Mon 11/18/19	Mon 11/18/19								
466		EMBELLECIMIENTO C/ GRAVILLA	4 days	Mon 11/18/19	Thu 11/21/19								
467		CASETA DE MATERIALES	2 days	Mon 11/18/19	Tue 11/19/19								
468		LIMPIEZA FINAL	2 days	Mon 11/18/19	Tue 11/19/19								
469		<b>EQUIPAMIENTO A NUEVOS POZOS</b>	<b>26 days</b>	<b>Mon 7/27/20</b>	<b>Mon 8/31/20</b>	<b>459</b>							
470		<b>ELECTRIFICACION PRIMARIA (POZO 7 )</b>	<b>7 days</b>	<b>Mon 7/27/20</b>	<b>Tue 8/4/20</b>								
471		POSTES HAV-12-500 DAN	7 days	Mon 7/27/20	Tue 8/4/20								
472		ESTRUCTURA MT-307	7 days	Mon 7/27/20	Tue 8/4/20								
473		ESTRUCTURA HA-100B	7 days	Mon 7/27/20	Tue 8/4/20								
474		ESTRUCTURA PR-101	7 days	Mon 7/27/20	Tue 8/4/20								
475		TRANSFORMADOR TIPO POSTE, 50 KVA, MONOFASICO, 7.2/12.5-240/480 V, SUMERGIDO EN ACEITE	7 days	Mon 7/27/20	Tue 8/4/20								
476		CUT-OUT, 200 AMP. 15 KV.	7 days	Mon 7/27/20	Tue 8/4/20								
477		APARTARRAYO DE 9 KV	7 days	Mon 7/27/20	Tue 8/4/20								
478		ALAMBRE AAAC No. 2/0	7 days	Mon 7/27/20	Tue 8/4/20								
479		GRAPA CALIENTE, No. 2/0	7 days	Mon 7/27/20	Tue 8/4/20								
480		PLATAFORMA EN MADERA PARA MONTAR TRANSFORMADORES.	7 days	Mon 7/27/20	Tue 8/4/20								
481		MANO DE OBRA ELÉCTRICA PRIMARIA (20%)	7 days	Mon 7/27/20	Tue 8/4/20								
482		HOYO PARA POSTES	7 days	Mon 7/27/20	Tue 8/4/20								
483		HOYO PARA VIENTOS	7 days	Mon 7/27/20	Tue 8/4/20								
484		INSTALACION DE POSTES	7 days	Mon 7/27/20	Tue 8/4/20								
485		ALIMENTACION SECUNDARIA	4 days	Wed 8/5/20	Mon 8/10/20	470							
486		ALAMBRE THW # 4/0	4 days	Wed 8/5/20	Mon 8/10/20								
487		ALAMBRE THW # 2/0	4 days	Wed 8/5/20	Mon 8/10/20								
488		TUBO PVC 3" X 10 PIES	4 days	Wed 8/5/20	Mon 8/10/20								
489		TUBO IMC 3" X 10 PIES, CON ABRAZADERA Y COUPLING	4 days	Wed 8/5/20	Mon 8/10/20								

Project: campo de pozos azua  
Date: Fri 9/18/20

Task		Project Summary		Manual Task		Start-only		Deadline	
Split		Inactive Task		Duration-only		Finish-only		Progress	
Milestone		Inactive Milestone		Manual Summary Rollup		External Tasks		Manual Progress	
Summary		Inactive Summary		Manual Summary		External Milestone			

ID	Task	Task Name	Duration	Start	Finish	Predecessors	Half 1, 2019	Half 2, 2019	Half 1, 2020	Half 2, 2020	Half 1, 2021	Half 2, 2021	Half 1, 2022
490		CONDULET IMC 3"	4 days	Wed 8/5/20	Mon 8/10/20								
491		CURVA PVC 3"	4 days	Wed 8/5/20	Mon 8/10/20								
492		TUBO LIQUIT- TIGHT 3" X 10 PIES	4 days	Wed 8/5/20	Mon 8/10/20								
493		CONECTORES PARA ALAMBRE No. 4/0, TIPO PERNO PARTIDO	4 days	Wed 8/5/20	Mon 8/10/20								
494		AUTOTRANSFORMADOR, PARA MOTOR DE 100 HP, 460 V, TRIFASICO, 60 HZ, INCLUYE, BREAKERS, MONITOR DE FASE PARA ALTO Y BAJO VOLTAJE, SENSOR TERMICO, BOTONERA DE ARRANQUE Y PARADA Y CUBIERTA NEMA 3R.	4 days	Wed 8/5/20	Mon 8/10/20								
495		MAIN BREAKER ENCLOUSURE 350/3 AMP.	4 days	Wed 8/5/20	Mon 8/10/20								
496		CONECTOR RECTO L.T. 21/2"	4 days	Wed 8/5/20	Mon 8/10/20								
497		CONECTOR CURVO L.T. 21/2"	4 days	Wed 8/5/20	Mon 8/10/20								
498		ABRAZADERA PARA TUBERIA EMT 21/2"	4 days	Wed 8/5/20	Mon 8/10/20								
499		MANO DE OBRA ALIMENTACION SUCUNDARIA (30%)	4 days	Wed 8/5/20	Mon 8/10/20								
500		INSTALACION HIDRAULICA	15 days	Tue 8/11/20	Mon 8/31/20	485							
501		SUMINISTRO DE ELECTROBOMBA CENTRÍFUGA VERTICAL, TIPO TURBINA DE 600 GPM CONTRA 470 PIES DE TDH, 1,750 RPM, CON CABEZAL DE DESCARGA 8", 150 PIES DE COLUMNAS DE 8", CON SUS EJES, COUPLING Y GUIAS, MOTOR ELECT. VERTICAL DE EJE HUECO, 100 HP, 460V, 3Ø, 60 HZ,	15 days	Tue 8/11/20	Mon 8/31/20								
502		VALVULA DE COMPUERTA 6", VASTAGO FIJO, 250 PSI H.F.(MARCA MULLER O SIMILAR) PLATILLADA, JUNTAS DE GOMA Y TORNILLOS	15 days	Tue 8/11/20	Mon 8/31/20								
503		VALVULA CHECK HORIZONTAL CON LIMITADOR DE CAUDAL Ø6", 250 PSI, H.F.	5 days	Tue 8/11/20	Mon 8/17/20								
504		VALVULA DE AIRE DE Ø1", COMPLETA .	5 days	Tue 8/11/20	Mon 8/17/20								
505		NIPLE Ø6" X 12", PLATILLADO EN UN EXTREMOS	5 days	Tue 8/11/20	Mon 8/17/20								
506		NIPLE Ø4" X 12", PLATILLADO EN UN EXTREMOS	5 days	Tue 8/11/20	Mon 8/17/20								
507		TEE Ø6" X 6" X 4", PLATILLADO EN TRES EXTREMOS	5 days	Tue 8/11/20	Mon 8/17/20								
508		JUNTAS Ø6" TIPO DRESSER	5 days	Tue 8/11/20	Mon 8/17/20								
509		ZEETA Ø6" X 3"	5 days	Tue 8/11/20	Mon 8/17/20								
510		INSTALACION MANOMETRICA COMPLETA, CON MANOMETRO DE 3-300 PSI, SUMERGIDO EN GLICERINA	5 days	Tue 8/11/20	Mon 8/17/20								

Project: campo de pozos azua  
Date: Fri 9/18/20

Task		Project Summary		Manual Task		Start-only		Deadline	
Split		Inactive Task		Duration-only		Finish-only		Progress	
Milestone		Inactive Milestone		Manual Summary Rollup		External Tasks		Manual Progress	
Summary		Inactive Summary		Manual Summary		External Milestone			

ID	Task	Task Name	Duration	Start	Finish	Predecessors	Half 1, 2019	Half 2, 2019	Half 1, 2020	Half 2, 2020	Half 1, 2021	Half 2, 2021	Half 1, 2022
511		VALVULA DE COMPUERTA 4", VASTAGO FIJO, 250 PSI H.F PLATILLADA, JUNTAS DE GOMA Y TORNILLOS	5 days	Tue 8/11/20	Mon 8/17/20								
512		TUBO Ø4" DE ACERO SCH-80	5 days	Tue 8/11/20	Mon 8/17/20								
513		NIPLE 12 X 24 PLATILLADO EN LOS EXTREMOS	3 days	Tue 8/11/20	Thu 8/13/20								
514		MANO DE OBRA INSTALACION ELECTROBOMBA, 10%	15 days	Tue 8/11/20	Mon 8/31/20								
515		MANO DE OBRA INSTALACION ELECTROBOMBA, 10%	10 days	Tue 8/11/20	Mon 8/24/20								
516		<b>CONSTRUCCION Y EQUIPAMIENTO DE POZO 8</b>	<b>17 days</b>	<b>Wed 8/5/20</b>	<b>Thu 8/27/20</b>	<b>470</b>							
517		GARITA PARA OPERADOR	8 days	Wed 8/5/20	Fri 8/14/20								
518		PRELIMINARES	1 day	Wed 8/5/20	Wed 8/5/20								
519		REPLANTEO	1 day	Wed 8/5/20	Wed 8/5/20								
520		MOVIMIENTO DE TIERRA	1 day	Wed 8/5/20	Wed 8/5/20								
521		HORMIGÓN ARMADO	2 days	Thu 8/6/20	Fri 8/7/20	519							
522		ZAPATA DE MUROS 0.45 X 0.25 (0.74 QQ)	2 days	Thu 8/6/20	Fri 8/7/20								
523		H.A. VIGA DE AMARRE 0.15 X 0.20 (4.36 QQ)	2 days	Thu 8/6/20	Fri 8/7/20								
524		H.A. LOSA DE TECHO , E= 0.10 (1.56 QQ)	2 days	Thu 8/6/20	Fri 8/7/20								
525		MURO DE BLOCKS	2 days	Mon 8/10/20	Tue 8/11/20	521							
526		BLOCK 6"	2 days	Mon 8/10/20	Tue 8/11/20								
527		BLOCK CALADO	2 days	Mon 8/10/20	Tue 8/11/20								
528		<b>TERMINACIÓN DE SUPERFICIE</b>	<b>3 days</b>	<b>Wed 8/12/20</b>	<b>Fri 8/14/20</b>	<b>525</b>							
529		PAÑETE INTERIOR(INCLUYE PAÑETE DE TECHO)	3 days	Wed 8/12/20	Fri 8/14/20								
530		PAÑETE EXTERIOR	3 days	Wed 8/12/20	Fri 8/14/20								
531		PAÑETE INTERIOR(INCLUYE PAÑETE DE TECHO)	3 days	Wed 8/12/20	Fri 8/14/20								
532		FINO DE TECHO	3 days	Wed 8/12/20	Fri 8/14/20								
533		FRAGUACHE EN TECHO	3 days	Wed 8/12/20	Fri 8/14/20								
534		ACERA PERIMETRAL 0.80M	3 days	Wed 8/12/20	Fri 8/14/20								
535		CANTOS Y MOCHETAS	3 days	Wed 8/12/20	Fri 8/14/20								
536		IMPERMEABILIZANTE DE TECHO	3 days	Wed 8/12/20	Fri 8/14/20								
537		REVESTIMIENTO PARED BANO	2 days	Wed 8/5/20	Thu 8/6/20								
538		PISOS H.S PULIDO	2 days	Wed 8/5/20	Thu 8/6/20								
539		ZABALETA	2 days	Wed 8/5/20	Thu 8/6/20								
540		REVESTIMIENTO EN PAREDES	2 days	Mon 8/17/20	Tue 8/18/20	528							
541		CERÁMICA CRIOLLA EN BAÑO (INC. TODOS LAS PAREDES DEL BAÑO )	2 days	Mon 8/17/20	Tue 8/18/20								
542		INSTALACION SANITARIA	1 day	Wed 8/19/20	Wed 8/19/20	540							
543		INODORO BLANCO SENCILLO	1 day	Wed 8/19/20	Wed 8/19/20								

Project: campo de pozos azua  
Date: Fri 9/18/20

Task		Project Summary		Manual Task		Start-only		Deadline	
Split		Inactive Task		Duration-only		Finish-only		Progress	
Milestone		Inactive Milestone		Manual Summary Rollup		External Tasks		Manual Progress	
Summary		Inactive Summary		Manual Summary		External Milestone			

ID	Task	Task Name	Duration	Start	Finish	Predecessors	Half 1, 2019	Half 2, 2019	Half 1, 2020	Half 2, 2020	Half 1, 2021	Half 2, 2021	Half 1, 2022
544		LAVAMANO BLANCO PEQUEÑO	1 day	Wed 8/19/20	Wed 8/19/20								
545		DESAGUE DE PISO	1 day	Wed 8/19/20	Wed 8/19/20								
546		COLUMNA DE VENTILACION 3"	1 day	Wed 8/19/20	Wed 8/19/20								
547		GALERIA DE INFILTRACION	1 day	Wed 8/19/20	Wed 8/19/20								
548		CAMARA DE INSPECCION	1 day	Wed 8/19/20	Wed 8/19/20								
549		CAMARA SEPTICA	1 day	Wed 8/19/20	Wed 8/19/20								
550		FILTRANTE 4"	1 day	Wed 8/19/20	Wed 8/19/20								
551		SUM. E INSTALACION TINACO 250GLS	1 day	Wed 8/19/20	Wed 8/19/20								
552		TUBERIAS Y PIEZAS AGUA POTABLE	1 day	Wed 8/19/20	Wed 8/19/20								
553		TUBERIAS Y PIEZAS AGUAS RESIDUALES	1 day	Wed 8/19/20	Wed 8/19/20								
554		M.O. PLOMERIA GENERAL	1 day	Wed 8/19/20	Wed 8/19/20								
555		PINTURA	2 days	Thu 8/20/20	Fri 8/21/20	542							
556		PINTURA ACRÍLICA	2 days	Thu 8/20/20	Fri 8/21/20								
557		PUERTAS Y VENTANAS	1 day	Mon 8/24/20	Mon 8/24/20	556							
558		PUERTAS EVERDOR( INCLUYE LLAVIN E INSTALACION )( 2.10 X 1.50 M)	1 day	Mon 8/24/20	Mon 8/24/20								
559		VENTANA DE ALUMINIO 0.60 X0.60	1 day	Mon 8/24/20	Mon 8/24/20								
560		INSTALACIONES ELÉCTRICAS	3 days	Tue 8/25/20	Thu 8/27/20	557							
561		SALIDA CENITAL	3 days	Tue 8/25/20	Thu 8/27/20								
562		INTERRUPTOR SENCILLO	3 days	Tue 8/25/20	Thu 8/27/20								
563		TOMACORRIENTES DOBLE, 120V	3 days	Tue 8/25/20	Thu 8/27/20								
564		PANEL DE DISTRIBUCION 4/8 CIRCUITOS (INC. BREAKERS)	3 days	Tue 8/25/20	Thu 8/27/20								
565		ORNAMENTACION EN VERJA PERIMETRAL	2 days	Wed 8/5/20	Thu 8/6/20								
566		LIMPIEZA FINAL	2 days	Wed 8/5/20	Thu 8/6/20								
567		<b>CASETA DE BOMBEO CON TECHO DESLIZABLE POZO.8</b>	<b>45 days</b>	<b>Fri 8/28/20</b>	<b>Thu 10/29/20</b>	<b>560</b>							
568		REPLANTEO	1 day	Fri 8/28/20	Fri 8/28/20								
569		MOVIMIENTO DE TIERRA	1 day	Fri 8/28/20	Fri 8/28/20								
570		<b>HORMIGON ARMADO EN: FC'=240 KG/CM2</b>	<b>3 days</b>	<b>Mon 8/31/20</b>	<b>Wed 9/2/20</b>	<b>568</b>							
571		ZAPATA DE MURO 0.36 QQ FC =180 KG/CM2	3 days	Mon 8/31/20	Wed 9/2/20								
572		VIGA 0.20 X 0.30 3.56 QQ	3 days	Mon 8/31/20	Wed 9/2/20								
573		LOSA DE TECHO 0.10- 0.48 QQ	3 days	Mon 8/31/20	Wed 9/2/20								
574		DINTEL 0.20 X 0.15 -3.89 QQ	3 days	Mon 8/31/20	Wed 9/2/20								
575		RAMPA D/ ACCESO A 0.05	3 days	Mon 8/31/20	Wed 9/2/20								
576		SOPORTE DE CORREDERA 0.89	3 days	Mon 8/31/20	Wed 9/2/20								
577		BASE DE MOTOR Y BOMBEO	3 days	Mon 8/31/20	Wed 9/2/20								
578		COLUMNA 0.20 X 0.15- 4.58 QQ/M3	3 days	Mon 8/31/20	Wed 9/2/20								
579		MUROS	4 days	Thu 9/3/20	Tue 9/8/20	571							

Project: campo de pozos azua  
Date: Fri 9/18/20

Task		Project Summary		Manual Task		Start-only		Deadline	
Split		Inactive Task		Duration-only		Finish-only		Progress	
Milestone		Inactive Milestone		Manual Summary Rollup		External Tasks		Manual Progress	
Summary		Inactive Summary		Manual Summary		External Milestone			



ID	Task	Task Name	Duration	Start	Finish	Predecessors	Half 1, 2019	Half 2, 2019	Half 1, 2020	Half 2, 2020	Half 1, 2021	Half 2, 2021	Half 1, 2022
580		MURO BLOCK 6" (B.N.P.)	4 days	Thu 9/3/20	Tue 9/8/20								
581		MURO BLOCK 6" (S.N.P.)	4 days	Thu 9/3/20	Tue 9/8/20								
582		MURO BLOCK CALADOS	4 days	Thu 9/3/20	Tue 9/8/20								
583		TERMINACION DE SUPERFICIE:	3 days	Wed 9/9/20	Fri 9/11/20	579							
584		PAÑETE EXTERIOR	3 days	Wed 9/9/20	Fri 9/11/20								
585		FINO LOSA TECHO	3 days	Wed 9/9/20	Fri 9/11/20								
586		CANTOS Y MOCHETAS	3 days	Wed 9/9/20	Fri 9/11/20								
587		ANTEPECHO DE BLOQUES (UNA LINEA DE BLOCK)	3 days	Wed 9/9/20	Fri 9/11/20								
588		PINTURA MANTENIMIENTO	3 days	Wed 9/9/20	Fri 9/11/20								
589		PISO HORMIGON PULIDO	3 days	Wed 9/9/20	Fri 9/11/20								
590		ZABALETA	3 days	Wed 9/9/20	Fri 9/11/20								
591		PORTAJE	1 day	Mon 9/14/20	Mon 9/14/20	583							
592		PUERTA METALICA POSTERIOR (1.00M X 2.10 M)	1 day	Mon 9/14/20	Mon 9/14/20								
593		VENTANA DE BLOCKS CALADOS	1 day	Mon 9/14/20	Mon 9/14/20								
594		PUERTA METALICA FRONTAL (4.00M X 2.70 M)	1 day	Mon 9/14/20	Mon 9/14/20								
595		INSTALACIONES ELECTRICAS	3 days	Tue 9/15/20	Thu 9/17/20	591							
596		ENTRADA GENERAL	3 days	Tue 9/15/20	Thu 9/17/20								
597		SALIDA CENTRALES	3 days	Tue 9/15/20	Thu 9/17/20								
598		INTERRUPTORES SENCILLOS	3 days	Tue 9/15/20	Thu 9/17/20								
599		TOMACORRIENTES SENCILLOS	3 days	Tue 9/15/20	Thu 9/17/20								
600		ACERA EXT. DE 0.80 DE ANCHO	3 days	Fri 8/28/20	Tue 9/1/20								
601		<b>TECHO DESLIZABLE (4.00M X5.00 M)</b>	<b>5 days</b>	<b>Fri 9/18/20</b>	<b>Thu 9/24/20</b>	<b>595</b>							
602		ANGULARES DE 11/2 X 3/16 P/ TIJERILLAS	5 days	Fri 9/18/20	Thu 9/24/20								
603		ALUZINC	5 days	Fri 9/18/20	Thu 9/24/20								
604		ZINC LISO	5 days	Fri 9/18/20	Thu 9/24/20								
605		ANGULAR 2" X 2" X 1/4"	5 days	Fri 9/18/20	Thu 9/24/20								
606		CHANNEL 4" X 1/2"	5 days	Fri 9/18/20	Thu 9/24/20								
607		CAJA DE BOLA	5 days	Fri 9/18/20	Thu 9/24/20								
608		CABALLETE	5 days	Fri 9/18/20	Thu 9/24/20								
609		SOLDADURA Y ELECTRODOS	5 days	Fri 9/18/20	Thu 9/24/20								
610		MANO DE OBRA	5 days	Fri 9/18/20	Thu 9/24/20								
611		VERJA MALLA CICLONICA	5 days	Fri 9/25/20	Thu 10/1/20	601							
612		VERJA DE MALLA CICLONICA CON 3 LINEAS BLOCK	5 days	Fri 9/25/20	Thu 10/1/20								
613		COLUMNA C2 ( 0.25 X 0.25 )- 4.75 (INC. ZAPATA)	3 days	Fri 9/25/20	Tue 9/29/20								
614		COLUMNA C1 (0.15 X 0.15 ) -8.75	2 days	Fri 9/25/20	Mon 9/28/20								
615		PUERTA MALLA CICLONICA (4 M)	2 days	Fri 9/25/20	Mon 9/28/20								

Project: campo de pozos azua  
Date: Fri 9/18/20

Task		Project Summary		Manual Task		Start-only		Deadline	
Split		Inactive Task		Duration-only		Finish-only		Progress	
Milestone		Inactive Milestone		Manual Summary Rollup		External Tasks		Manual Progress	
Summary		Inactive Summary		Manual Summary		External Milestone			

ID	Task	Task Name	Duration	Start	Finish	Predecessors	Half 1, 2019	Half 2, 2019	Half 1, 2020	Half 2, 2020	Half 1, 2021	Half 2, 2021	Half 1, 2022
616		LOGO Y LETRERO DE INAPA	2 days	Fri 8/28/20	Mon 8/31/20								
617		SUMINISTRO Y COLOC. MATERIAL P/ RELLENO	2 days	Fri 8/28/20	Mon 8/31/20								
618		EMBELLECIMIENTO C/ GRAVILLA	2 days	Fri 8/28/20	Mon 8/31/20								
619		CASETA DE MATERIALES	2 days	Fri 8/28/20	Mon 8/31/20								
620		LIMPIEZA FINAL	2 days	Fri 8/28/20	Mon 8/31/20								
621		<b>EQUIPAMIENTO A NUEVOS POZOS</b>	<b>3 days</b>	<b>Fri 10/2/20</b>	<b>Tue 10/6/20</b>	611							
622		<b>ELECTRIFICACION PRIMARIA (POZO 8)</b>	<b>3 days</b>	<b>Fri 10/2/20</b>	<b>Tue 10/6/20</b>								
623		POSTES HAV-12-500 DAN	3 days	Fri 10/2/20	Tue 10/6/20								
624		ESTRUCTURA MT-307	3 days	Fri 10/2/20	Tue 10/6/20								
625		ESTRUCTURA HA-100B	3 days	Fri 10/2/20	Tue 10/6/20								
626		ESTRUCTURA PR-101	3 days	Fri 10/2/20	Tue 10/6/20								
627		TRANSFORMADOR TIPO POSTE, 50 KVA, MONOFASICO, 7.2/12.5-240/480 V, SUMERGIDO EN ACEITE	3 days	Fri 10/2/20	Tue 10/6/20								
628		CUT-OUT, 200 AMP. 15 KV.	3 days	Fri 10/2/20	Tue 10/6/20								
629		APARTARRAYO DE 9 KV	3 days	Fri 10/2/20	Tue 10/6/20								
630		ALAMBRE AAAC No. 2/0	3 days	Fri 10/2/20	Tue 10/6/20								
631		GRAPA CALIENTE, No. 2/0	3 days	Fri 10/2/20	Tue 10/6/20								
632		PLATAFORMA EN MADERA PARA MONTAR TRANSFORMADORES.	3 days	Fri 10/2/20	Tue 10/6/20								
633		MANO DE OBRA ELÉCTRICA PRIMARIA (20%)	3 days	Fri 10/2/20	Tue 10/6/20								
634		HOYO PARA POSTES	3 days	Fri 10/2/20	Tue 10/6/20								
635		HOYO PARA VIENTOS	3 days	Fri 10/2/20	Tue 10/6/20								
636		INSTALACION DE POSTES	3 days	Fri 10/2/20	Tue 10/6/20								
637		ALIMENTACION SECUNDARIA	2 days	Wed 10/7/20	Thu 10/8/20	622							
638		ALAMBRE THW # 4/0	2 days	Wed 10/7/20	Thu 10/8/20								
639		ALAMBRE THW # 2/0	2 days	Wed 10/7/20	Thu 10/8/20								
640		TUBO PVC 3" X 10 PIES	2 days	Wed 10/7/20	Thu 10/8/20								
641		TUBO IMC 3" X 10 PIES, CON ABRAZADERA Y COUPLING	2 days	Wed 10/7/20	Thu 10/8/20								
642		CONDULET IMC 3"	2 days	Wed 10/7/20	Thu 10/8/20								
643		CURVA PVC 3"	2 days	Wed 10/7/20	Thu 10/8/20								
644		TUBO LIQUIT- TIGHT 3" X 10 PIES	2 days	Wed 10/7/20	Thu 10/8/20								
645		CONECTORES PARA ALAMBRE No. 4/0, TIPO PERNO PARTIDO	2 days	Wed 10/7/20	Thu 10/8/20								

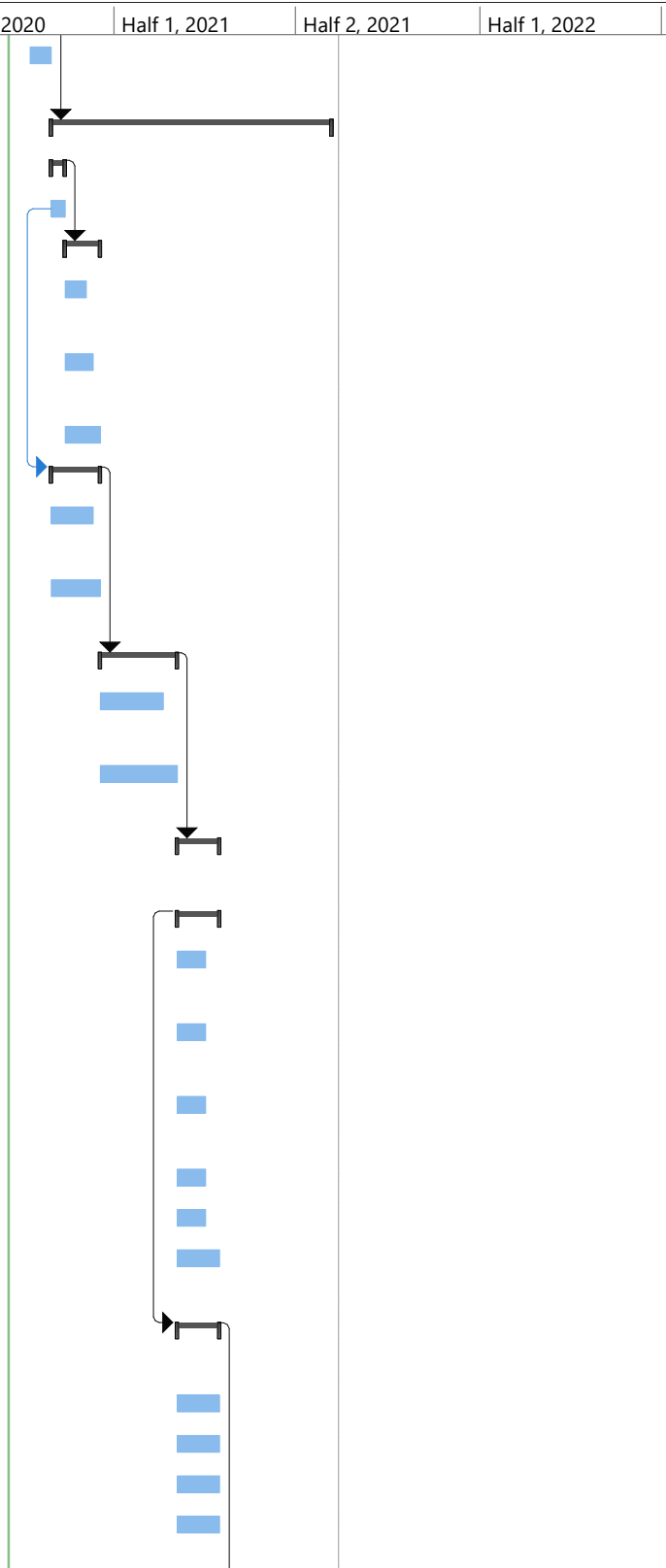
Project: campo de pozos azua  
Date: Fri 9/18/20

Task		Project Summary		Manual Task		Start-only		Deadline	
Split		Inactive Task		Duration-only		Finish-only		Progress	
Milestone		Inactive Milestone		Manual Summary Rollup		External Tasks		Manual Progress	
Summary		Inactive Summary		Manual Summary		External Milestone			

ID	Task	Task Name	Duration	Start	Finish	Predecessors	Half 1, 2019	Half 2, 2019	Half 1, 2020	Half 2, 2020	Half 1, 2021	Half 2, 2021	Half 1, 2022
646		AUTOTRANSFORMADOR, PARA MOTOR DE 100 HP, 460 V, TRIFASICO, 60 HZ, INCLUYE, BREAKERS, MONITOR DE FASE PARA ALTO Y BAJO VOLTAJE, SENSOR TERMICO, BOTONERA DE ARRANQUE Y PARADA Y CUBIERTA NEMA 3R.	2 days	Wed 10/7/20	Thu 10/8/20								
647		MAIN BREAKER ENCLOUSURE 350/3 AMP.	2 days	Wed 10/7/20	Thu 10/8/20								
648		CONECTOR RECTO L.T. 21/2"	2 days	Wed 10/7/20	Thu 10/8/20								
649		CONECTOR CURVO L.T. 21/2"	2 days	Wed 10/7/20	Thu 10/8/20								
650		ABRAZADERA PARA TUBERIA EMT 21/2"	2 days	Wed 10/7/20	Thu 10/8/20								
651		MANO DE OBRA ALIMENTACION SUCUNDARIA (30%)	2 days	Wed 10/7/20	Thu 10/8/20								
652		INSTALACION HIDRAULICA	15 days	Fri 10/9/20	Thu 10/29/20	637							
653		SUMINISTRO DE ELECTROBOMBA CENTRÍFUGA VERTICAL, TIPO TURBINA DE 600 GPM CONTRA 470 PIES DE TDH, 1,750 RPM, CON CABEZAL DE DESCARGA 8", 150 PIES DE COLUMNAS DE 8", CON SUS EJES, COUPLING Y GUIAS, MOTOR ELECT. VERTICAL DE EJE HUECO, 100 HP, 460V, 3Ø, 60 HZ,	7 days	Fri 10/9/20	Mon 10/19/20								
654		VALVULA DE COMPUERTA 6", VASTAGO FIJO, 250 PSI H.F.(MARCA MULLER O SIMILAR) PLATILLADA, JUNTAS DE GOMA Y TORNILLOS	7 days	Fri 10/9/20	Mon 10/19/20								
655		VALVULA CHECK HORIZONTAL CON LIMITADOR DE CAUDAL Ø6", 250 PSI, H.F.	5 days	Fri 10/9/20	Thu 10/15/20								
656		VALVULA DE AIRE DE Ø1", COMPLETA .	5 days	Fri 10/9/20	Thu 10/15/20								
657		NIPLE Ø6" X 12", PLATILLADO EN UN EXTREMOS	5 days	Fri 10/9/20	Thu 10/15/20								
658		NIPLE Ø4" X 12", PLATILLADO EN UN EXTREMOS	5 days	Fri 10/9/20	Thu 10/15/20								
659		TEE Ø6" X 6" X 4", PLATILLADO EN TRES EXTREMOS	5 days	Fri 10/9/20	Thu 10/15/20								
660		JUNTAS Ø6" TIPO DRESSER	5 days	Fri 10/9/20	Thu 10/15/20								
661		ZEETA Ø6" X 3"	5 days	Fri 10/9/20	Thu 10/15/20								
662		INSTALACION MANOMETRICA COMPLETA, CON MANOMETRO DE 3-300 PSI, SUMERGIDO EN GLICERINA	5 days	Fri 10/9/20	Thu 10/15/20								
663		VALVULA DE COMPUERTA 4", VASTAGO FIJO, 250 PSI H.F PLATILLADA, JUNTAS DE GOMA Y TORNILLOS	5 days	Fri 10/9/20	Thu 10/15/20								
664		TUBO Ø4" DE ACERO SCH-80	5 days	Fri 10/9/20	Thu 10/15/20								
665		NIPLE 12 X 24 PLATILLADO EN LOS EXTREMOS	3 days	Fri 10/9/20	Tue 10/13/20								

Project: campo de pozos azua Date: Fri 9/18/20	Task		Project Summary		Manual Task		Start-only		Deadline	
	Split		Inactive Task		Duration-only		Finish-only		Progress	
	Milestone		Inactive Milestone		Manual Summary Rollup		External Tasks		Manual Progress	
	Summary		Inactive Summary		Manual Summary		External Milestone			

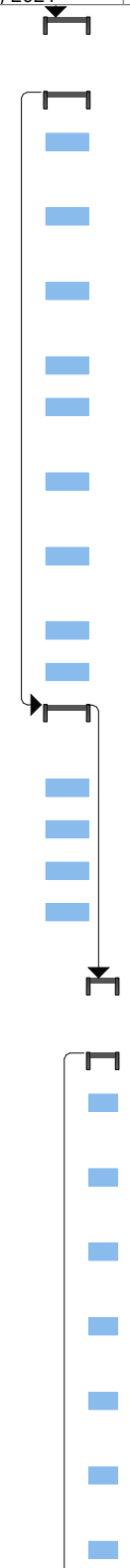
ID	Task	Task Name	Duration	Start	Finish	Predecessors	Half 1, 2019	Half 2, 2019	Half 1, 2020	Half 2, 2020	Half 1, 2021	Half 2, 2021	Half 1, 2022
666	MANO DE OBRA INSTALACION ELECTROBOMBA, 10%	15 days	Fri 10/9/20	Thu 10/29/20									
667	LINEA DE IMPULSION	200 days	Fri 10/30/20	Thu 8/5/21	652								
668	PRELIMINARES	10 days	Fri 10/30/20	Thu 11/12/20									
669	REPLANTEO	10 days	Fri 10/30/20	Thu 11/12/20									
670	MOVIMIENTO DE TIERRA	25 days	Fri 11/13/20	Thu 12/17/20	668								
671	EXCAVACION MATERIAL NO CLASIFICADO C/EQUIPO	15 days	Fri 11/13/20	Thu 12/3/20									
672	RELLENO COMPACTADO C/COMPACTADOR MECANICO EN CAPAS DE 0.30 M	20 days	Fri 11/13/20	Thu 12/10/20									
673	BOTE DE MATERIAL C/CAMION	25 days	Fri 11/13/20	Thu 12/17/20									
674	SUMINISTRO DE	35 days	Fri 10/30/20	Thu 12/17/20	669SS								
675	TUBERIA DE ACERO DE 6" SCH-40 CON PROTECCION ANTICORROSIVA	30 days	Fri 10/30/20	Thu 12/10/20									
676	TUBERIA DE ACERO DE 20" SCH-20 CON PROTECCION ANTICORROSIVA	35 days	Fri 10/30/20	Thu 12/17/20									
677	COLOCACION DE	55 days	Fri 12/18/20	Thu 3/4/21	674								
678	TUBERIA DE ACERO DE 6" SCH-40 CON PROTECCION ANTICORROSIVA	45 days	Fri 12/18/20	Thu 2/18/21									
679	TUBERIA DE ACERO DE 20" SCH-20 CON PROTECCION ANTICORROSIVA	55 days	Fri 12/18/20	Thu 3/4/21									
680	<b>EMPALME C/LINEA MATRIZ EXISTENTE PARA POZO 8</b>	<b>30 days</b>	<b>Fri 3/5/21</b>	<b>Thu 4/15/21</b>	<b>677</b>								
681	SUMINISTRO DE PIEZAS ESPECIALES	30 days	Fri 3/5/21	Thu 4/15/21									
682	YEE 20" X 6" SCH-40 CON PROTECCION ANTICORROSIVA	20 days	Fri 3/5/21	Thu 4/1/21									
683	JUNTA MECANICA TIPO DRESSER (150 PSI) DE 20"	20 days	Fri 3/5/21	Thu 4/1/21									
684	TUBERIA DE ACERO DE 20" SCH-40 CON PROTECCION ANTICORROSIVA	20 days	Fri 3/5/21	Thu 4/1/21									
685	REDUCCION DE 20@6	20 days	Fri 3/5/21	Thu 4/1/21									
686	ANCLAJE H.S P/PIEZAS YEE 20" X 6"	20 days	Fri 3/5/21	Thu 4/1/21									
687	ANCLAJE H.S P/PIEZAS REDUCCION DE 20@6	30 days	Fri 3/5/21	Thu 4/15/21									
688	<b>MANO DE OBRA (INCLUYE CORTE DE TUBERIA EXISTENTE)</b>	<b>30 days</b>	<b>Fri 3/5/21</b>	<b>Thu 4/15/21</b>	<b>681SS</b>								
689	PLOMERO (1 H @ RD\$1,977.00)	30 days	Fri 3/5/21	Thu 4/15/21									
690	AYUDANTE PLOMERO (1 H @ RD\$859.00)	30 days	Fri 3/5/21	Thu 4/15/21									
691	OBRAERO (2H @ RD\$659.00)	30 days	Fri 3/5/21	Thu 4/15/21									
692	USO DE EQUIPO DE CORTE (PULIDORA Y PLANTA ELECTRICA)	30 days	Fri 3/5/21	Thu 4/15/21									



Project: campo de pozos azua  
Date: Fri 9/18/20

Task		Project Summary		Manual Task		Start-only		Deadline	
Split		Inactive Task		Duration-only		Finish-only		Progress	
Milestone		Inactive Milestone		Manual Summary Rollup		External Tasks		Manual Progress	
Summary		Inactive Summary		Manual Summary		External Milestone			

ID	Task	Task Name	Duration	Start	Finish	Predecessors	Half 1, 2019	Half 2, 2019	Half 1, 2020	Half 2, 2020	Half 1, 2021	Half 2, 2021	Half 1, 2022
693		<b>EMPALME C/LINEA MATRIZ EXISTENTE PARA POZO 4, 4A, Y 6.</b>	<b>30 days</b>	<b>Fri 4/16/21</b>	<b>Thu 5/27/21</b>	<b>688</b>							
694		SUMINISTRO DE PIEZAS ESPECIALES	30 days	Fri 4/16/21	Thu 5/27/21								
695		JUNTA MECANICA TIPO DRESSER Ø16" (150 PSI)	30 days	Fri 4/16/21	Thu 5/27/21								
696		YEE 20" X 16" SCH-40 CON PROTECCION ANTICORROSIVA	30 days	Fri 4/16/21	Thu 5/27/21								
697		JUNTA REDUCTORAS DE 22 @ 20 SCH-40 CON PROTECCION ANTICORROSIVA	30 days	Fri 4/16/21	Thu 5/27/21								
698		NIPLE ACERO DE 16"	30 days	Fri 4/16/21	Thu 5/27/21								
699		CODO 16 X 45" SCH-40 CON PROTECCION ANTICORROSIVA	30 days	Fri 4/16/21	Thu 5/27/21								
700		TUBERIA DE ACERO DE 20" SCH-40 CON PROTECCION ANTICORROSIVA	30 days	Fri 4/16/21	Thu 5/27/21								
701		TAPON DE 16" CON PROTECCION ANTICORROSIVA	30 days	Fri 4/16/21	Thu 5/27/21								
702		ANCLAJE H.S P/PIEZAS( YEE 20"X 16")	30 days	Fri 4/16/21	Thu 5/27/21								
703		ANCLAJE H.S P/PIEZAS( CODO 16"X 45")	30 days	Fri 4/16/21	Thu 5/27/21								
704		<b>MANO DE OBRA (INCLUYE CORTE DE TUBERIA EXISTENTE)</b>	<b>30 days</b>	<b>Fri 4/16/21</b>	<b>Thu 5/27/21</b>	<b>694SS</b>							
705		PLOMERO (1 H @ RD\$1,977.00)	30 days	Fri 4/16/21	Thu 5/27/21								
706		AYUDANTE PLOMERO ( 3H @ RD\$859.00)	30 days	Fri 4/16/21	Thu 5/27/21								
707		OBRERO (3H @ RD\$659.00)	30 days	Fri 4/16/21	Thu 5/27/21								
708		USO DE EQUIPO DE CORTE (PULIDORA Y PLANTA ELECTRICA)	30 days	Fri 4/16/21	Thu 5/27/21								
709		<b>EMPALME C/LINEA MATRIZ EXISTENTE PARA POZO 7.</b>	<b>20 days</b>	<b>Fri 5/28/21</b>	<b>Thu 6/24/21</b>	<b>704</b>							
710		<b>SUMINISTRO DE PIEZAS ESPECIALES</b>	<b>20 days</b>	<b>Fri 5/28/21</b>	<b>Thu 6/24/21</b>								
711		CODO 6" X 60" SCH-40 CON PROTECCION ANTICORROSIVA	20 days	Fri 5/28/21	Thu 6/24/21								
712		CODO 6" X 22.5" SCH-40 CON PROTECCION ANTICORROSIVA	20 days	Fri 5/28/21	Thu 6/24/21								
713		REDUCCION 12" X 6" SCH-40 CON PROTECCION ANTICORROSIVA	20 days	Fri 5/28/21	Thu 6/24/21								
714		JUNTA MECANICA TIPO DRESSER Ø20" (150 PSI)	20 days	Fri 5/28/21	Thu 6/24/21								
715		CODO 16" X 45" SCH-40 CON PROTECCION ANTICORROSIVA	20 days	Fri 5/28/21	Thu 6/24/21								
716		JUNTA MECANICA TIPO DRESSER Ø16" (150 PSI)	20 days	Fri 5/28/21	Thu 6/24/21								
717		REDUCCION 20" 16" SCH-40 CON PROTECCION ANTICORROSIVA	20 days	Fri 5/28/21	Thu 6/24/21								



Project: campo de pozos azua  
Date: Fri 9/18/20

Task		Project Summary		Manual Task		Start-only		Deadline	
Split		Inactive Task		Duration-only		Finish-only		Progress	
Milestone		Inactive Milestone		Manual Summary Rollup		External Tasks		Manual Progress	
Summary		Inactive Summary		Manual Summary		External Milestone			



ID	Task	Task Name	Duration	Start	Finish	Predecessors	Half 1, 2019	Half 2, 2019	Half 1, 2020	Half 2, 2020	Half 1, 2021	Half 2, 2021	Half 1, 2022
718		NIPLE ACERO 16" SCH-40 CON PROTECCION ANTICORROSIVA	20 days	Fri 5/28/21	Thu 6/24/21								
719		TUBERIA DE ACERO DE 12" SCH-40 CON PROTECCION ANTICORROSIVA	20 days	Fri 5/28/21	Thu 6/24/21								
720		ANCLAJE H.S P/PIEZAS CODO 16" X 45"	20 days	Fri 5/28/21	Thu 6/24/21								
721		ANCLAJE H.S P/PIEZAS REDUCCION 20" X16"	20 days	Fri 5/28/21	Thu 6/24/21								
722		<b>MANO DE OBRA (INCLUYE CORTE DE TUBERIA EXISTENTE)</b>	<b>20 days</b>	<b>Fri 5/28/21</b>	<b>Thu 6/24/21</b>	<b>710SS</b>							
723		PLOMERO (1 H @ RD\$1,977.00)	20 days	Fri 5/28/21	Thu 6/24/21								
724		AYUDANTE PLOMERO (1 H @ RD\$859.00)	20 days	Fri 5/28/21	Thu 6/24/21								
725		OBRERO (2H @ RD\$659.00)	20 days	Fri 5/28/21	Thu 6/24/21								
726		USO DE EQUIPO DE CORTE (PULIDORA Y PLANTA ELECTRICA)	20 days	Fri 5/28/21	Thu 6/24/21								
727		VARIOS	200 days	Fri 10/30/20	Thu 8/5/21								
728		VALLA ANUNCIANDO OBRA 16' X 10' IMPRESION FULL COLOR CONTENIENDO LOGO DE INAPA, NOMBRE DE PROYECTO Y CONTRATISTA. ESTRUCTURA EN TUBOS GALVANIZADOS 1 1/2"X 1 1/2" Y SOPORTES EN TUBO CUAD. 4" X 4"	15 days	Fri 10/30/20	Thu 11/19/20								
729		CAMPAMENTO ( INCLUYE ALQUILER DEL SOLAR CON O SIN CASA, BAÑOS MOVILES Y CASETA DE MATERIALES)	200 days	Fri 10/30/20	Thu 8/5/21								
730		GASTOS INDIRECTOS	454 days	Mon 11/18/19	Thu 8/12/21								
731		GASTOS ADMINISTRATIVOS	454 days	Mon 11/18/19	Thu 8/12/21								
732		HONORARIOS PROFESIONALES	454 days	Mon 11/18/19	Thu 8/12/21								
733		SEGUROS,POLIZAS Y FIANZAS	454 days	Mon 11/18/19	Thu 8/12/21								
734		SUPERVISION DE LA OBRA	454 days	Mon 11/18/19	Thu 8/12/21								
735		GASTOS DE TRANSPORTE	454 days	Mon 11/18/19	Thu 8/12/21								
736		LEY 6-86	454 days	Mon 11/18/19	Thu 8/12/21								
737		ITBIS ( LEY 07-2007 )	454 days	Mon 11/18/19	Thu 8/12/21								
738		CODIA	454 days	Mon 11/18/19	Thu 8/12/21								
739		ESTUDIO Y DISEÑO	454 days	Mon 11/18/19	Thu 8/12/21								
740		INTERCONEXION ELECTRICA CON EDESUR (POZO 3)	454 days	Mon 11/18/19	Thu 8/12/21								
741		OPERACIÓN Y MANTENIMIENTO DE SISTEMA DE INAPA	454 days	Mon 11/18/19	Thu 8/12/21								
742		IMPREVISTOS	454 days	Mon 11/18/19	Thu 8/12/21								
743		PERFORACION DE POZO	454 days	Mon 11/18/19	Thu 8/12/21								
744		PERFORACION POR PERCUSION EN Ø24" ACERO	60 days	Mon 11/18/19	Fri 2/7/20								
745		SUMINISTRO DE ZAPATA DE ACERO DE Ø24"	60 days	Mon 11/18/19	Fri 2/7/20								

Project: campo de pozos azua  
Date: Fri 9/18/20

Task		Project Summary		Manual Task		Start-only		Deadline	
Split		Inactive Task		Duration-only		Finish-only		Progress	
Milestone		Inactive Milestone		Manual Summary Rollup		External Tasks		Manual Progress	
Summary		Inactive Summary		Manual Summary		External Milestone			

ID	Task	Task Name	Duration	Start	Finish	Predecessors	Half 1, 2019	Half 2, 2019	Half 1, 2020	Half 2, 2020	Half 1, 2021	Half 2, 2021	Half 1, 2022
746	→	ENCAMISADO Ø 24"ACERO	60 days	Mon 11/18/19	Fri 2/7/20								
747	→	SUMINISTRO DE TUBERIA DE Ø24" ACERO, E=3/8"	60 days	Mon 11/18/19	Fri 2/7/20								
748	→	PERFORACION POR PERCUSION EN Ø16" ACERO	60 days	Mon 11/18/19	Fri 2/7/20								
749	→	SUMINISTRO DE ZAPATA DE ACERO DE Ø16"	60 days	Mon 11/18/19	Fri 2/7/20								
750	→	RANURADO Ø16" ACERO, E=3/8"	60 days	Mon 11/18/19	Fri 2/7/20								
751	→	ENCAMISADO Ø 16"ACERO	60 days	Mon 11/18/19	Fri 2/7/20								
752	→	SUMINISTRO DE TUBERIA DE Ø16" ACERO, E=3/8"	60 days	Mon 11/18/19	Fri 2/7/20								
753	→	ENCAMISADO EN TUBERIA DE Ø12" ACERO, E=3/8"	60 days	Mon 11/18/19	Fri 2/7/20								
754	→	RANURADO Ø12" ACERO, E=3/8"	60 days	Mon 11/18/19	Fri 2/7/20								
755	→	SUMINISTRO TUBERIA Ø12"ACERO, E=3/8"	60 days	Mon 11/18/19	Fri 2/7/20								
756	→	LIMPIEZA Y DESARROLLO POR PISTONEO Ø16"	60 days	Mon 11/18/19	Fri 2/7/20								
757	→	LIMPIEZA Y DESARROLLO POR PISTONEO Ø12"	60 days	Mon 11/18/19	Fri 2/7/20								
758	→	COLOCACION EMPAQUE GRADUADO GRAVA DE E=1/8"@1/4"	60 days	Mon 11/18/19	Fri 2/7/20								
759	→	EXTRACCION TUBERIA 16"ACERO	60 days	Mon 11/18/19	Fri 2/7/20								
760	→	TRANSPORTE DE EQUIPO PESADO EN EL CAMPO DE POZOS	60 days	Mon 11/18/19	Fri 2/7/20								
761	→	AFORO ESCALONADO 48 HORAS CON TOMA DE MUESTRAS EN CADA ESCALON	60 days	Mon 11/18/19	Fri 2/7/20								
762	→	<b>GASTOS INDIRECTOS PERFORACION POZOS</b>	<b>454 days</b>	<b>Mon 11/18/19</b>	<b>Thu 8/12/21</b>								
763	→	HONORARIOS PROFESIONALES	454 days	Mon 11/18/19	Thu 8/12/21								
764	→	SUPERVISIÓN	454 days	Mon 11/18/19	Thu 8/12/21								
765	→	LEY 6-86	454 days	Mon 11/18/19	Thu 8/12/21								
766	→	ITBIS DE LOS HONORARIOS PROFESIONALES	454 days	Mon 11/18/19	Thu 8/12/21								
767	→	TRANSPORTE	454 days	Mon 11/18/19	Thu 8/12/21								

Project: campo de pozos azua  
Date: Fri 9/18/20

Task		Project Summary		Manual Task		Start-only		Deadline	
Split		Inactive Task		Duration-only		Finish-only		Progress	
Milestone		Inactive Milestone		Manual Summary Rollup		External Tasks		Manual Progress	
Summary		Inactive Summary		Manual Summary		External Milestone			